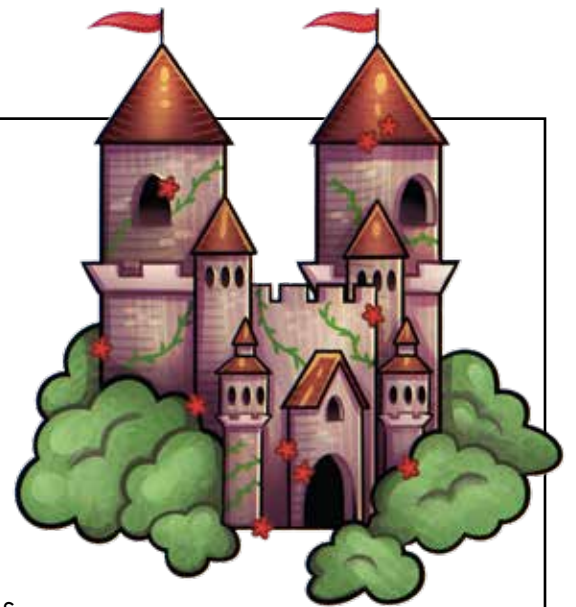


Name: \_\_\_\_\_

# Caroline and the Castle

By Kelly Hashway



Caroline lived deep in the forest. In the forest there were enchanted fairies, ancient trees with arms, and talking woodland animals. Everything was magical in the forest, and Caroline was always happy there. Caroline's family lived in a tree house, high in the air, in this magical forest. The enchanted creatures of the forest all became friends with



## Preview

Please log in to download the printable version of this worksheet.

...for them and showed the way to the castle doors, carefully avoiding the overgrown rose bushes. When they reached the door, it opened to reveal a royal corridor. A beautiful queen appeared from a nearby room, and greeted them with a bow. After talking about the forest and how they got to the castle, the queen invited them to stay for dinner. A magnificent feast was prepared, and Caroline was most thrilled with the selection of desserts and cakes. She liked the chocolate truffles most.

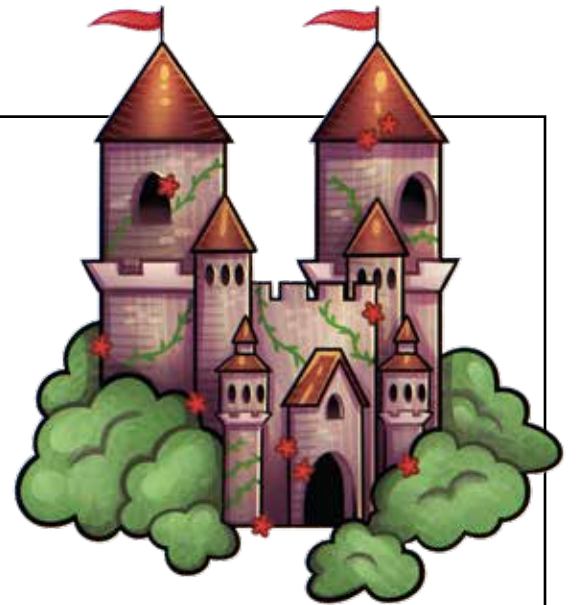
After the royal feast, Caroline and her family bid their farewells and began the journey home. Caroline awoke in her bed the next day, wondering if it was all a dream.



Name: \_\_\_\_\_

# Caroline and the Castle

By Kelly Hashway



1. What kind of a house did Caroline live in?

---

---



## Preview

Please log in to download the printable version of this worksheet.

4. Name two things from the story that could not happen in real life.

---

---

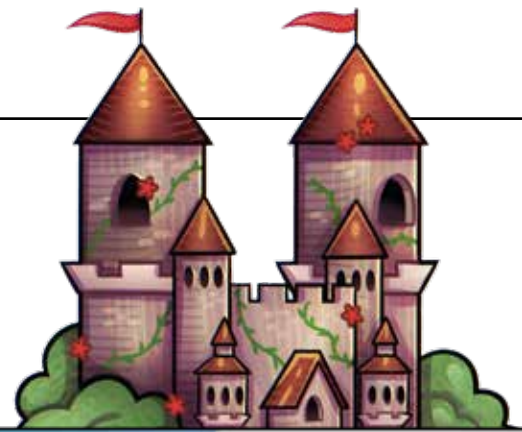
5. Name two things from the story that could happen in real life.

---

---

**Something extra:** On the back of this paper, draw a picture of the castle and the rose garden. Include lots of details from the story.

# Caroline and the Castle



# Preview

Please log in to download the printable version of this worksheet.



**Caroline could really have a feast. (Answers will vary.)**

**Something extra:** On the back of this paper, draw a picture of the castle and the rose garden. Include lots of details from the story.