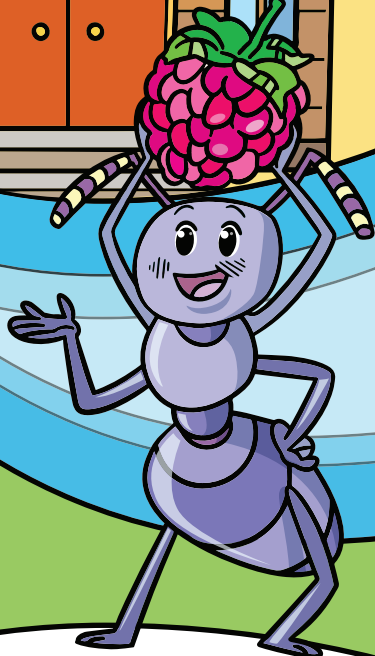
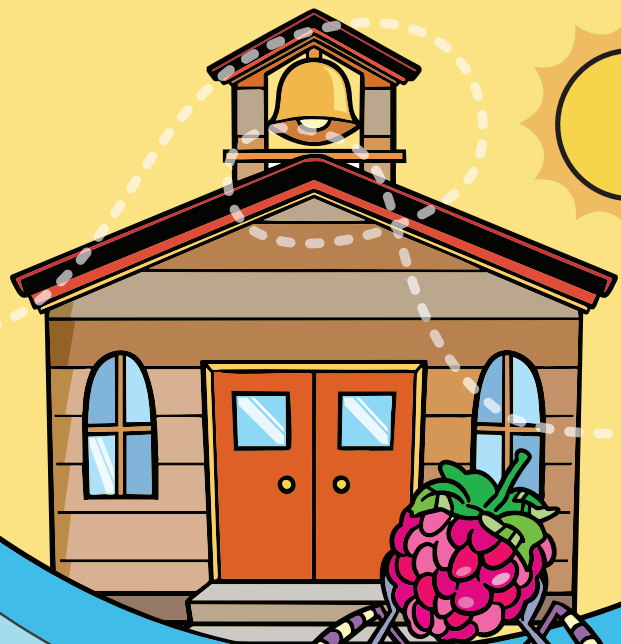




Super Teacher Summer Packet

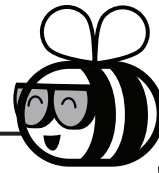
Summer Buzz

Daily ELA Practice
Week Two Packet



Grade
2

Name: _____



Summer Buzz

Write the words in order to make a complete sentence.

draw.

Mr.

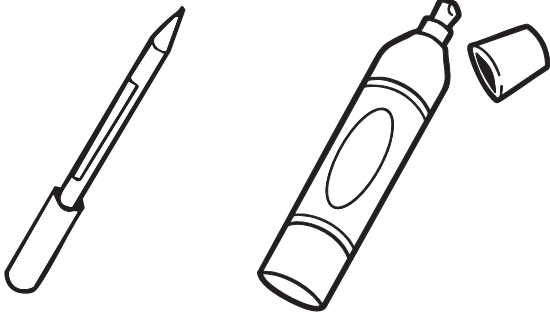
likes

Ruiz

to

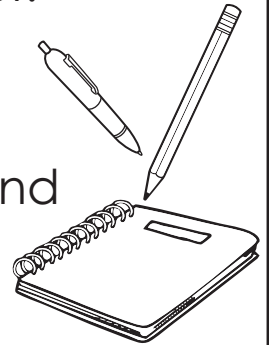


Circle the **thick** marker.

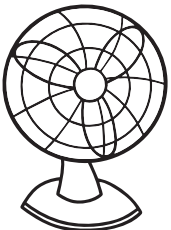


Add two commas to make the sentence correct.

Please bring me
a pen pencil and
some paper.



Which definition of the bolded word does each sentence use?
Write the letter on the line.



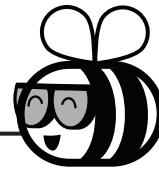
- a.** a machine that moves air and makes things cooler
- b.** a person who likes something a lot

I like to sleep with the **fan** on. _____

Leon is a **fan** of cartoons. _____



Name: _____



Summer Buzz

The words **a**, **an**, and **the** are articles.
Circle the article in each sentence.

Anya went to the store with her mom.

I have never eaten a mango.

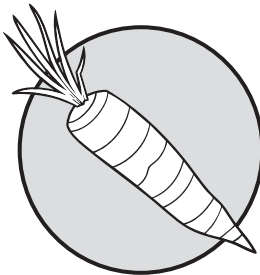
Otis always has an orange at lunch.



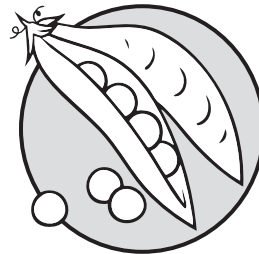
Which date
is written
correctly?

- a. July 3, 2026
- b. july 3, 2026
- c. July, 3, 2026
- d. July 3 2026

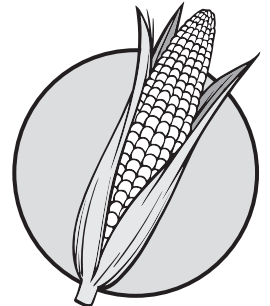
Fill in the missing letter to complete
each word. Circle the two words that
start with the same sound.



___ arrot



___ eas



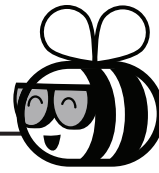
___ orn

Fix the mistakes in the sentence. Then rewrite it correctly.

Can We buy apples, plums, and graps! (3 errors)



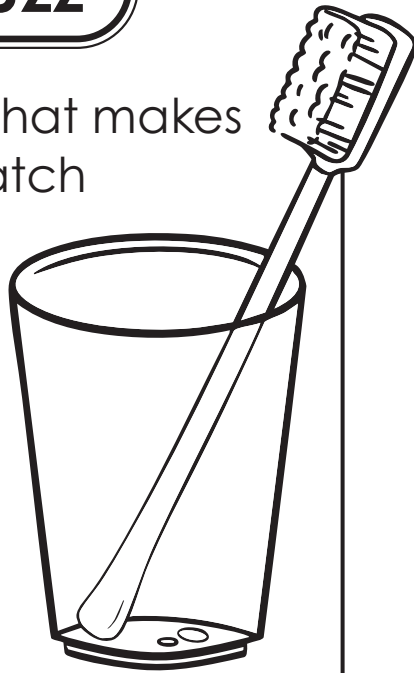
Name: _____



Summer Buzz

Circle the word that makes
the sentence match
the picture.

I put my
toothbrush
in / on
the cup.

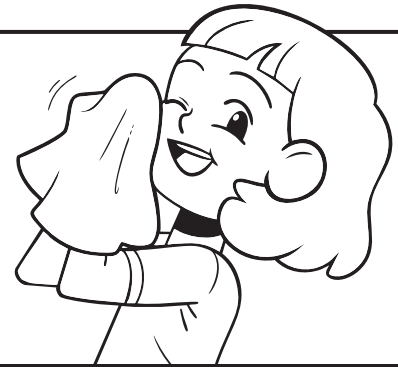


Write the words in
ABC order.

no, cup, my, see

Circle the 2 adjectives
in the sentence.

The towel was fluffy and warm.



Sort the items into the room where they belong. If an item
belongs in both rooms, put it in the middle under **both**.

sink

tub

oven

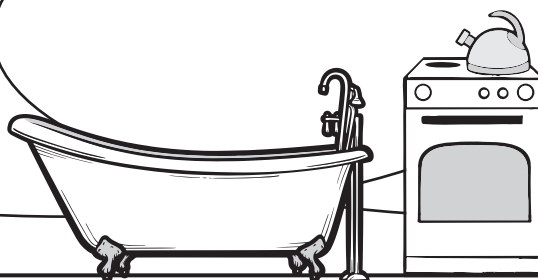
fridge

toothpaste

kitchen

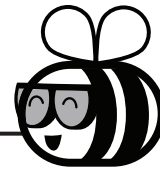
both

bathroom



Name: _____

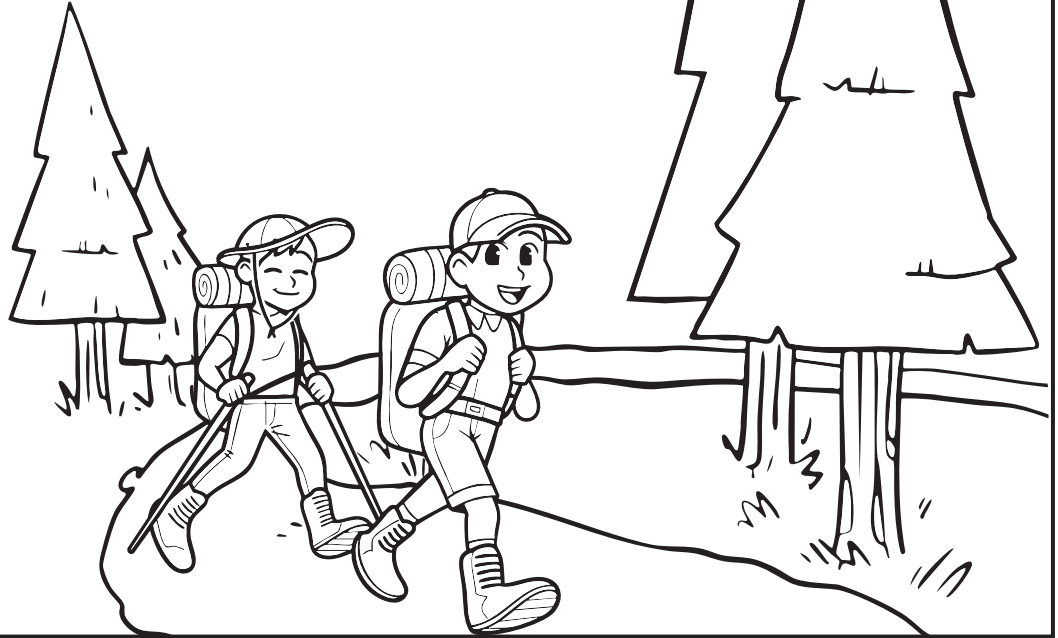
Summer Buzz



What does the underlined word mean?
Use other words in the sentences to help.

Always go hiking
with other people.
Never go solo.

- a. quietly
- b. alone
- c. early



Complete the sentence with
the correct contraction.



don't **doesn't**

Max _____
like camping.

Color the two words
that rhyme with **bear**.

beach

fair

care

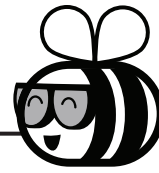
beet

Put a check next to the sentence that
tells about the future.

- My family will go camping soon.
- We went to my favorite waterfall.



Name: _____

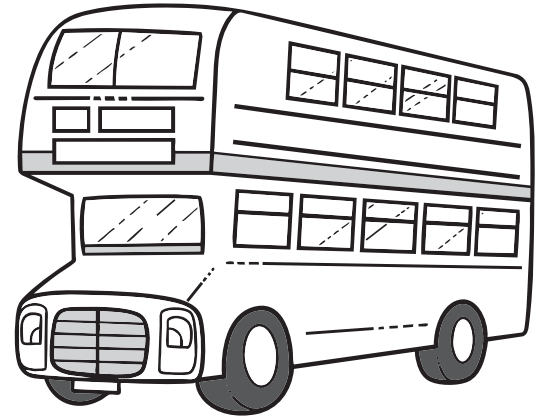


Summer Buzz

Do you ride the bus to school? There are many kinds of buses. They all take people from one place to another.

School buses take kids to school. Public buses take people around their town or city. People may ride these buses to work. They may ride them to the store. Tour buses take people on trips. You may take a tour bus on vacation.

Some buses even have two floors! These are called double-deckers.

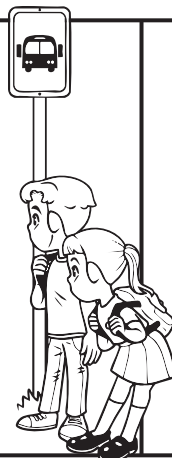


1. What does the word **public** mean?
 - a. shared by all
 - b. only used by one family
 - c. nice-looking
2. What is a bus with two floors called?

3. List 2 places a bus can take you.

Circle the correct question word to complete the sentence.

Where / Who is your bus stop?



Draw a slash (/) between the two syllables in each word.

a c r o s s

h u r r y

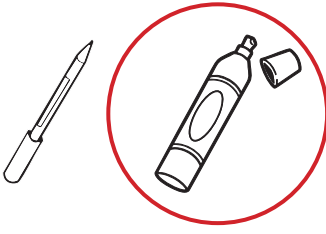


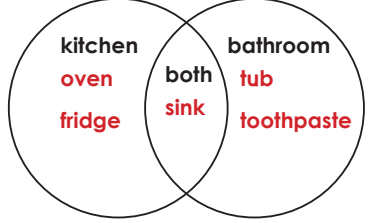
Summer Buzz ANSWERS



Daily ELA Practice

B

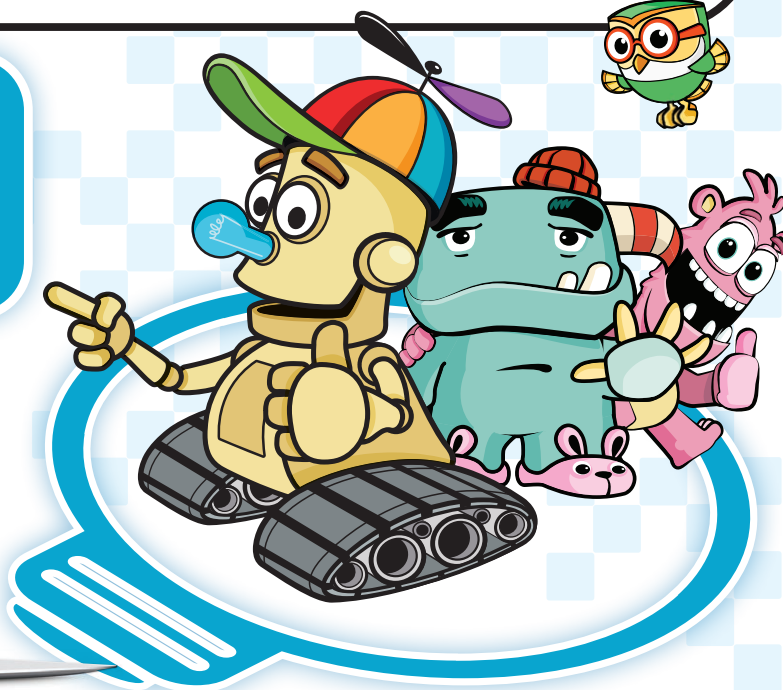
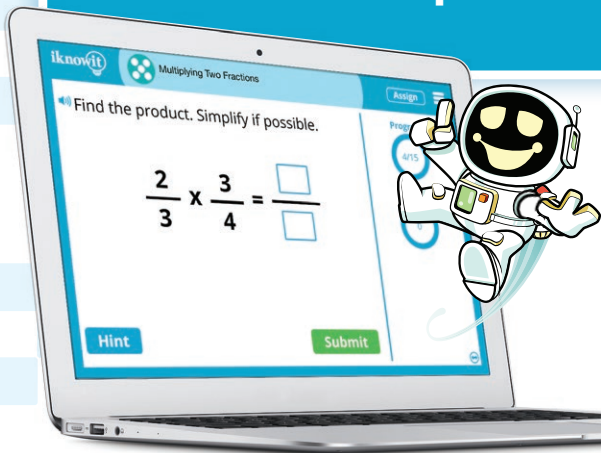
Week 2

<p>Write the words in order to make a complete sentence.</p> <p>draw. Mr. likes Ruiz to</p> <p>Mr. Ruiz likes to draw.</p>	<p>Circle the thick marker.</p> 	<p>Add two commas to make the sentence correct.</p> <p>Please bring me a pen, pencil, and some paper.</p>	<p>Which definition of the bolded word does each sentence use? Write the letter on the line.</p> <p>a. a machine that moves air and makes things cooler</p> <p>b. a person who likes something a lot</p> <p>I like to sleep with the fan on. <u>a</u></p> <p>Leon is a fan of cartoons. <u>b</u></p>
<p>The words a, an, and the are articles. Circle the article in each sentence.</p> <p>Anya went to the store with her mom.</p> <p>I have never eaten a mango.</p> <p>Otis always has an orange at lunch.</p>	<p>Which date is written correctly?</p> <p>a. July 3, 2026</p> <p>b. july 3, 2026</p> <p>c. July, 3, 2026</p> <p>d. July 3 2026</p>	<p>Fill in the missing letter to complete each word. Circle the two words that start with the same sound.</p>  <p>carrot peas corn</p>	<p>Fix the mistakes in the sentence. Then rewrite it correctly.</p> <p>Can We buy apples, plums, and graps! (3 errors)</p> <p>Can we buy apples, plums, and grapes?</p>
<p>Circle the word that makes the sentence match the picture.</p> <p>I put my toothbrush in/ on the cup.</p> 	<p>Put the words in ABC order.</p> <p>no, cup, my, see</p> <p>cup</p> <p>my</p> <p>no</p> <p>see</p>	<p>Circle the 2 adjectives in the sentence.</p> <p>The towel was fluffy and warm.</p>	<p>Sort the items into the room where they belong.</p> 
<p>What does the underlined word mean? Use other words in the sentences to help.</p> <p>Always go hiking with other people. Never go <u>solo</u>.</p> <p>a. quietly</p> <p>b. alone</p> <p>c. early</p>	<p>Complete the sentence with the correct contraction.</p> <p>don't doesn't</p> <p>Max doesn't like camping.</p>	<p>Color the words that can be used to mean something is large.</p> <p>beach fair</p> <p>care beet</p>	<p>Put a check next to the sentence that tells about the future.</p> <p><input checked="" type="checkbox"/> My family will go camping soon.</p> <p><input type="checkbox"/> We went to my favorite waterfall.</p>
<p>What does the word public mean?</p> <p>a. shared by all</p> <p>What is a bus with two floors called?</p> <p>a double-decker</p> <p>List 2 places a bus can take you.</p> <p>Answers will vary.</p>	<p>Circle the correct question word to complete the sentence.</p> <p>Where/ Who is your bus stop?</p>	<p>Draw a slash (/) between the two syllables in each word.</p> <p>a/c r o s s</p> <p>h u r / r y</p>	<p style="background-color: #cccccc; height: 100px;"></p>

Start a **FREE** trial today at

www.iknowit.com

Engage your elementary students with interactive math and ELA practice.



Thank you for being
a valued member of
Super Teacher Worksheets!

