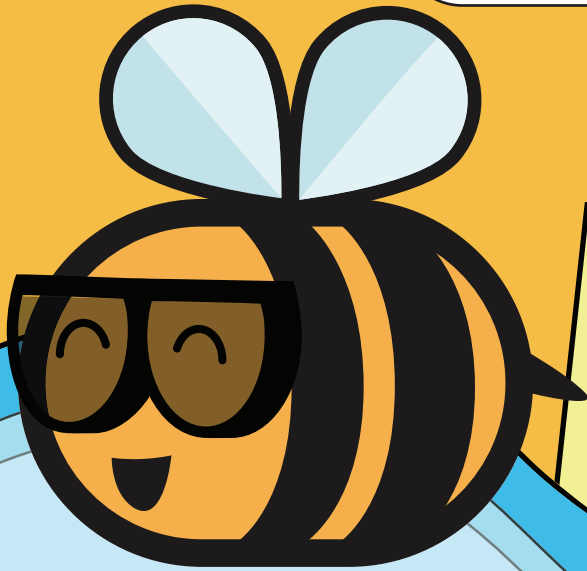




Super Teacher Summer Packet

Summer Buzz

Comprehensive Practice
Week One Packet



Math

ELA

Grade

5

Daily Word Problem

Sebastian drew a rectangle.

The length of the rectangle was 27 cm.

The width of the rectangle was one third of the length.

What was the area of Sebastian's rectangle?

Show your work.

answer: _____



What Does It Mean?

Using Context Clues



Read each sentence below. Use the other words in the sentence to help you figure out the meaning of the underlined word. Fill in the circle for the correct answer.

- All of the singers' voices harmonized beautifully.
 went well together went poorly together were too loud
- Mom worries that the new game will make Mael neglect his homework.
 lose; misplace care about ignore; not do
- The lake was so immense that we couldn't see across to the other side.
 large deep shiny; sparkling
- It was uncomfortable to be licked by the cat's coarse tongue.
 rough silky soft
- Selah set a timer to remind herself to periodically stir the soup.
 without stopping from time to time strongly
- The moon was completely concealed behind thick clouds.
 forgotten bright hidden
- Kenneth was so exhausted when he got home that he fell right asleep.
 angry tired excited
- I was sick, but the unsympathetic teacher didn't give me more time.
 not skilled uncaring understanding
- The fire burned down many buildings, but luckily no one perished.
 lived; were safe lost anything died; stopped existing

Invisible Lines



If you look at a map or globe, you will probably notice lots of lines. Some lines are vertical (up and down) and some lines are horizontal (side to side). If you look at a picture of the Earth from space, you won't see any lines!

The lines on maps and globes are imaginary. The vertical lines are called lines of longitude. They go north and south. The horizontal lines are called lines of latitude. They go east and west. Latitude and longitude lines help measure distance on Earth.

Maybe you have heard of the equator. The equator is an imaginary line of latitude that runs right through the middle of the Earth. It is the halfway point between the North Pole and South Pole.

1. What type of lines go north and south? _____
2. What type of lines go east and west? _____
3. What is the best meaning of the word *imaginary* in this passage?
 - a. invisible
 - b. visible
 - c. made-up
 - d. real
4. Why did the author write this?
 - a. to teach about lines of latitude and longitude
 - b. to teach about space
 - c. to teach about globes
 - d. to teach about maps
5. What is the equator?

Fix the Sentences

"Mom, can u pleas help me with my homework" Marco asked. **3 errors**

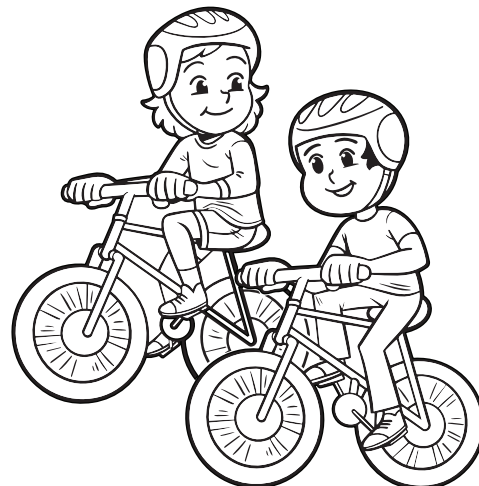
I can help you after dinner. Mom responded. **3 errors**



Fix the Sentences

Liam and me love too ride are bikes together after school. **3 errors**

Liam ride his bike faster than I. **2 errors**



Secret Code Math

Multiplication: 2-Digits by 2-Digits

Decode the numbers and find the products.

1



2



3



4



5



6



7



8



9



0



a. Code Numbers

Regular Numbers

$$\begin{array}{r} \text{⚡} \text{◇} \\ \times \text{😊} \text{★} \\ \hline \end{array}$$

$$\begin{array}{r} 46 \\ \times 12 \\ \hline \end{array}$$

b. Code Numbers

Regular Numbers

$$\begin{array}{r} \text{♥} \text{□} \\ \times \text{⚡} \text{✱} \\ \hline \end{array}$$

c. Code Numbers

Regular Numbers

$$\begin{array}{r} \text{◎} \text{★} \\ \times \text{↑} \text{😊} \\ \hline \end{array}$$

d. Code Numbers

Regular Numbers

$$\begin{array}{r} \text{◇} \text{◇} \\ \times \text{⚡} \text{□} \\ \hline \end{array}$$

e. Code Numbers

Regular Numbers

$$\begin{array}{r} \text{✱} \text{▮} \\ \times \text{◎} \text{✱} \\ \hline \end{array}$$

f. Code Numbers

Regular Numbers

$$\begin{array}{r} \text{▮} \text{😊} \\ \times \text{↑} \text{⚡} \\ \hline \end{array}$$

www.superteacherworksheets.com/summer-buzz/

Sign up to access
over **25,000**
printable activities!

Only \$24.95

For an Individual Subscription Per Year

