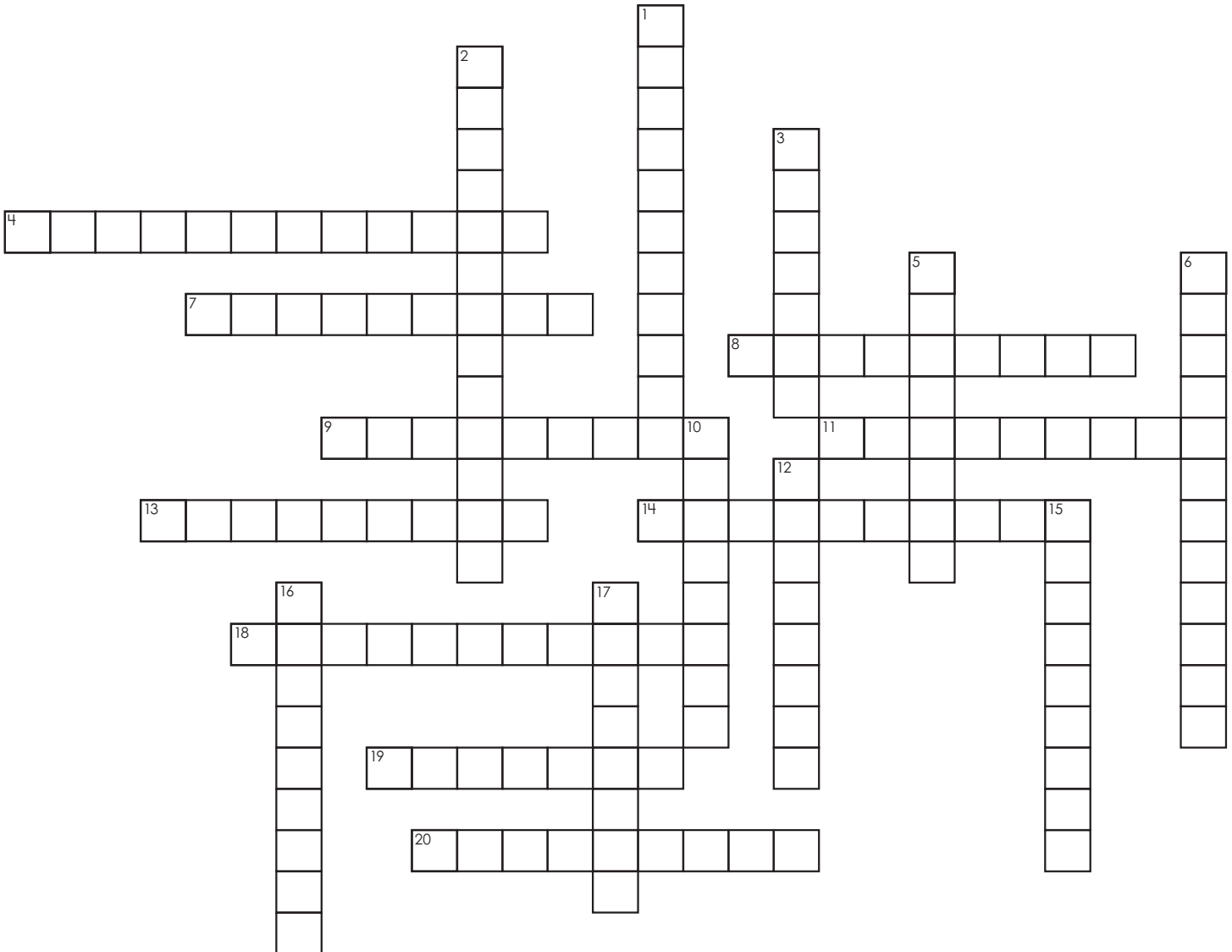


Name: \_\_\_\_\_

# Spelling Crossword Puzzle

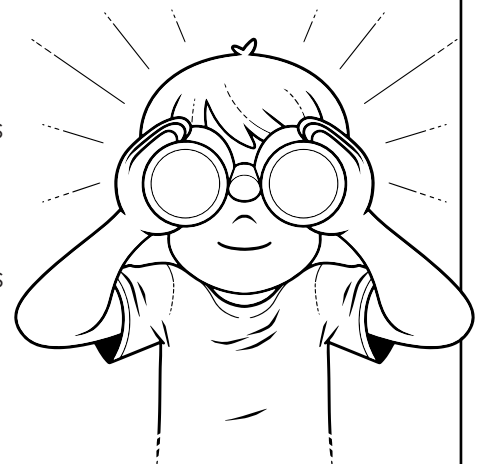


## DOWN

1. word parts mean *hearing and sight*
2. encompassing diverse groups of people
3. Some \_\_\_\_ plants die above water.
5. complete ownership, especially of an industry
6. The word *colonel* isn't spelled \_\_\_\_.
10. clues or signs
12. The letter *M* on the napkin is a \_\_\_\_.
15. doubt; mis- or distrust; a hunch
16. word parts mean *to look around*
17. conversation; speech

## ACROSS

4. religions with multiple gods
7. a great amount
8. being fluent in two languages
9. unable to be heard
11. to copy; the copy itself
13. applicable to everything
14. used to magnify distant things
18. Lack of water results in \_\_\_\_.
19. a meeting after being apart
20. to theorize about

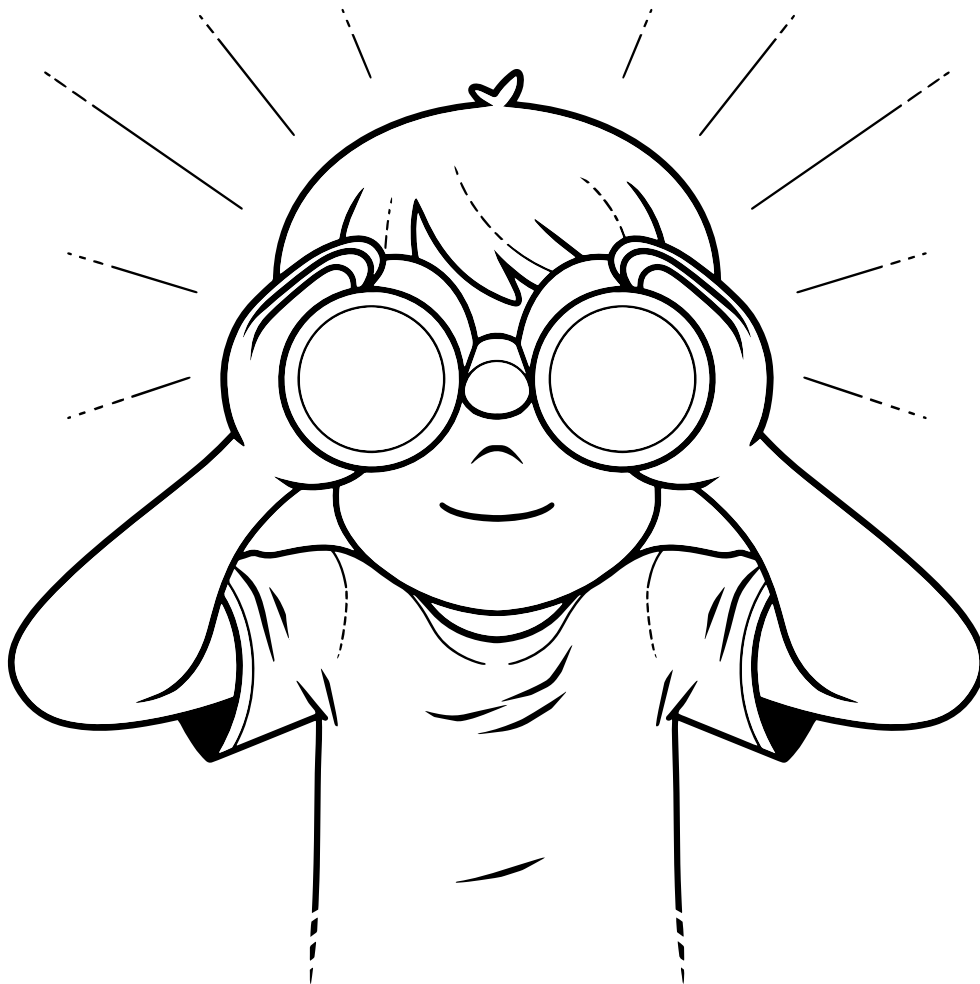


# Spelling Crossword Puzzle

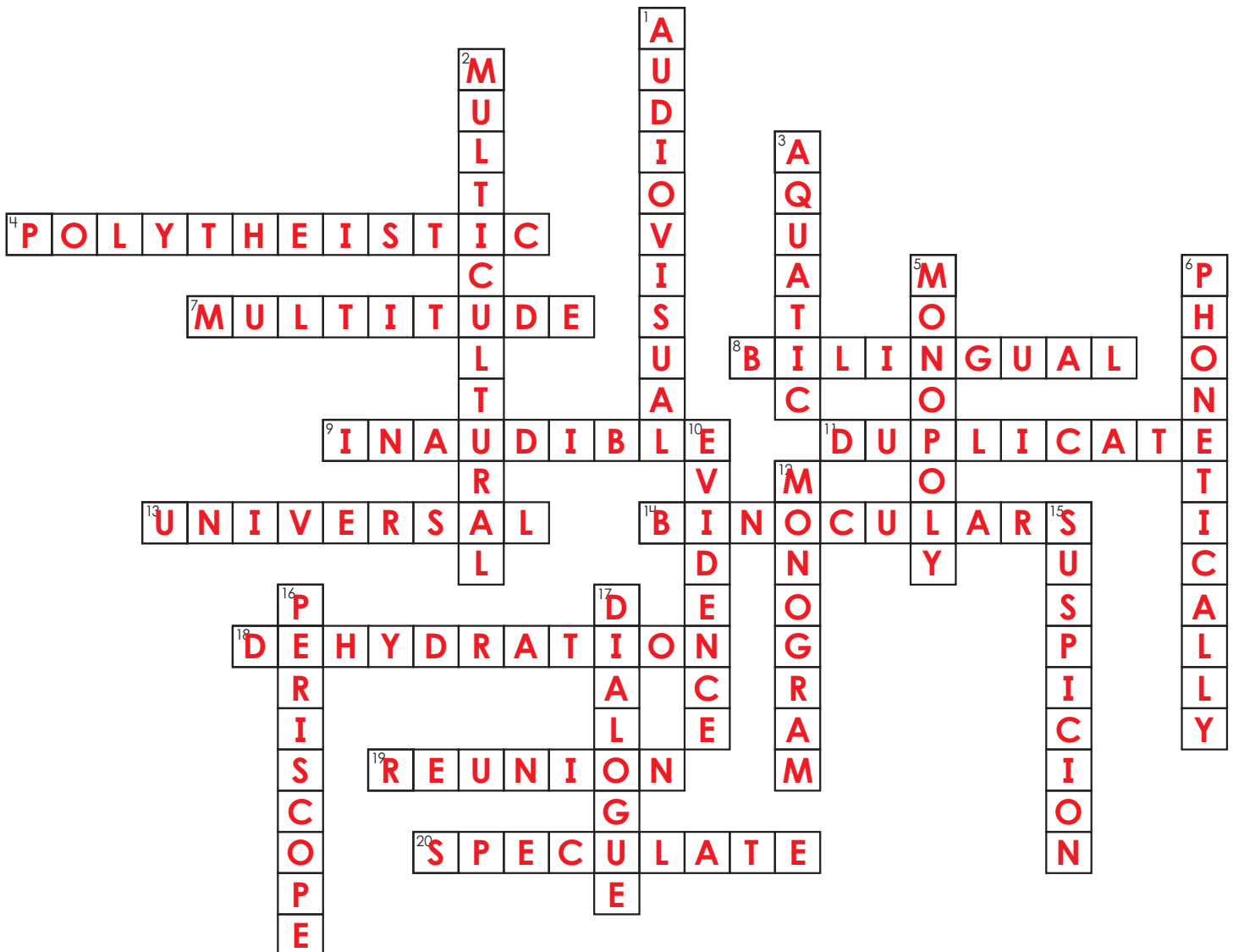
## Spelling Words

binoculars	bilingual	polytheistic	evidence
reunion	duplicate	dehydration	audiovisual
universal	dialogue	aquatic	speculate
monopoly	multicultural	inaudible	suspicion
monogram	multitude	phonetically	periscope

**Note to Teachers:** Copy this word bank to the back of the puzzle page. Also, Review and Challenge words are not included in this puzzle.



## Spelling Crossword Puzzle



### DOWN

1. word parts mean *hearing and sight*
2. encompassing diverse groups of people
3. Some \_\_\_\_ plants die above water.
5. complete ownership, especially of an industry
6. The word *colonel* isn't spelled \_\_\_\_.
10. clues or signs
12. The letter *M* on the napkin is a \_\_\_\_.
15. doubt; mis- or distrust; a hunch
16. word parts mean *to look around*
17. conversation; speech

### ACROSS

4. religions with multiple gods
7. a great amount
8. being fluent in two languages
9. unable to be heard
11. to copy; the copy itself
13. applicable to everything
14. used to magnify distant things
18. Lack of water results in \_\_\_\_.
19. a meeting after being apart
20. to theorize about

