

Name: _____

A **metaphor** (pronounced: MET-uh-for) is a figure of speech that describes one thing as something else. How many metaphors are in this poem?

The Metaphor Family

by Lill Pluta

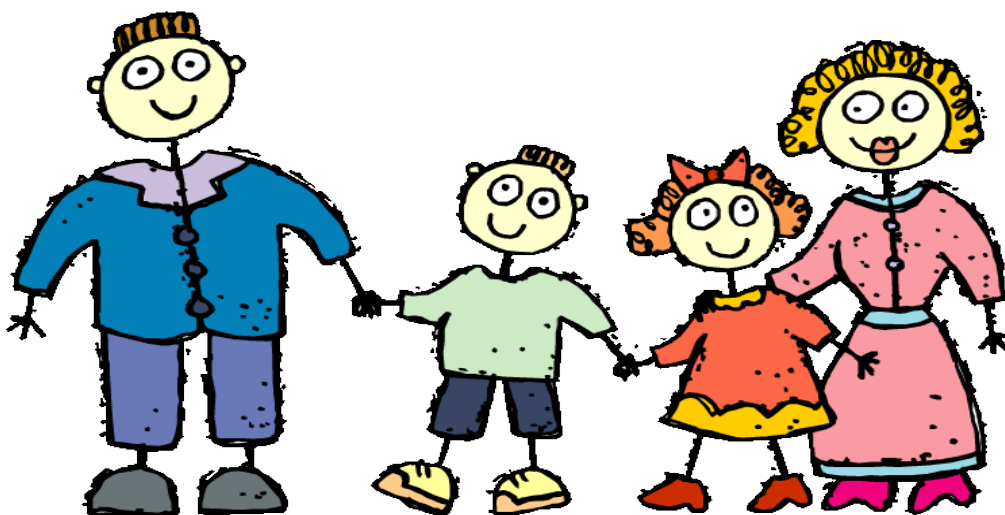
My brother is a dragon.
My mom's a teddy bear.
I am a shaggy sheepdog
with a ton of tanaled hair.



~ **PREVIEW** ~

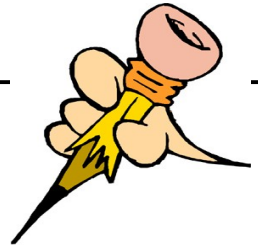
Please log in or register to download
the printable version of this worksheet.

We are a busy family
with many things to do.
Our home is always happy,
but sometimes it's a zoo.



Name: _____

Metaphors



Mom said my bedroom is a pig pen. What does she mean?

My friend Joey is a clown. What does this mean?

Everyone calls me a little angel. What do they probably mean?

Write a met

A red-bordered rectangular box containing a cartoon superhero character on the left, the word "PREVIEW" in large red letters in the center, and a message below it: "Please log in or register to download the printable version of this worksheet." The superhero is wearing a red suit with a blue cape and is holding a green gift box. The word "PREVIEW" is flanked by two red squiggly lines.

~ **PREVIEW** ~

Please log in or register to download
the printable version of this worksheet.

Write a metaphor about someone who is a fast runner.

Write a metaphor about someone who is not well-behaved.

Write a metaphor about a tree.

Write a nice metaphor about one of your friends.
