

Name: _____

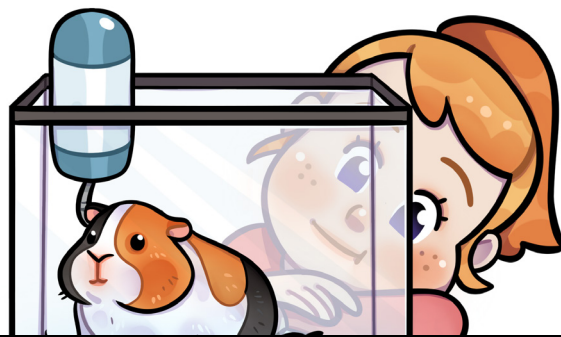
Circle Graphs

Circle graphs, also called pie charts, show categories or values as parts of a whole. The fraction of the circle each wedge takes up is equal to the fraction of the data set taken up by the category or value it represents. Fractions are often given as percents.

Step 1: Use a tally or frequency chart to organize data into categories or values.

Step 2: Find the fraction of the whole that each category or value represents, or $\frac{\text{part}}{\text{whole}}$. Multiply the quotient by 100 to find percent.

Favorite Pet Rodent	Tally	Fraction / Percent
gerbil		$\frac{5}{20}$ or 25%
hamster		$\frac{7}{20}$ or 35%
rat		$\frac{2}{20}$ or 10%
chinchilla		$\frac{2}{20}$ or 10%



Preview

Please log in to download the printable version of this worksheet.

