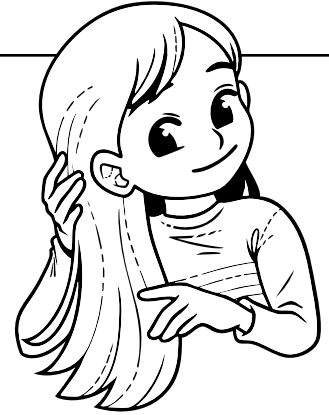


Name: _____

Frequency Table

Fletcher measures the length of his classmates' hair to the nearest inch as part of a project.

14, 16, 10, 19, 22, 30, 1, 0, 21, 17, 5, 14,
33, 9, 26, 3, 28, 6, 12, 2, 11, 15, 3, 5



Complete the frequency table using Fletcher's data, then answer the questions.

Hair Length	Tally	Frequency
0–6		
7–13		
14–20		



Preview

Please log in to download
the printable version of this worksheet.

4. Students with 21–34-inch-long hair form a 1:1 ratio _____
with which range of hair lengths?
5. What percent of students have 0–13-inch-long hair? _____

Circle *T* (true) or *F* (false) for each statement.

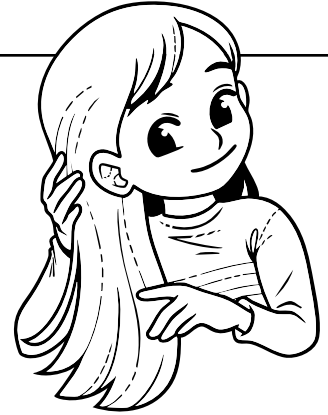
- | | | |
|---|----------|----------|
| 6. The ratio of students with 14–20-inch-long hair to students with 7–13-inch-long hair is 3:2. | T | F |
| 7. 25% of Fletcher's classmates have 14–20-inch-long hair. | T | F |
| 8. The shortest and longest length ranges are in a 3:1 ratio. | T | F |

ANSWER KEY

Frequency Table

Fletcher measures the length of his classmates' hair to the nearest inch as part of a project.

14, 16, 10, 19, 22, 30, 1, 0, 21, 17, 5, 14,
33, 9, 26, 3, 28, 6, 12, 2, 11, 15, 3, 5



Complete the frequency table using Fletcher's data, then answer the questions.

Hair Length	Tally	Frequency
-------------	-------	-----------

Preview

Please log in to download
the printable version of this worksheet.



8. The shortest and longest length ranges are in a 3:1 ratio.