

# Elapsed Time

Elapsed time is the amount of time that passes between two times: the start time and the end time. There are a few ways to find elapsed time.

The swim meet started at 5:30 p.m. It ended at 8:00 p.m.  
How long was the swim meet?



## T-Chart

Time	Hours and Minutes
5:30	start
8:00	1 hour

## Number Line



# Preview

Please log in to download  
the printable version of this worksheet.

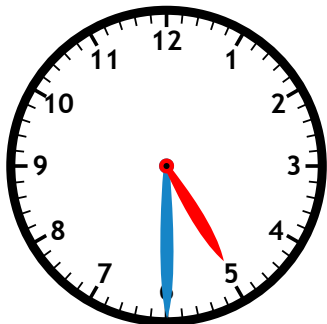
**2 hours and 30 minutes** long.

← elapsed time

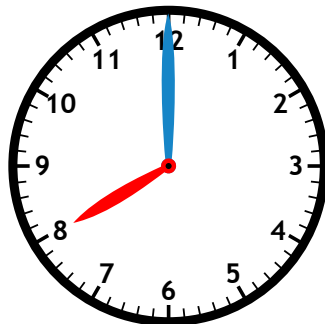
**2 hours and 30 minutes** long.

← elapsed time

## Clocks



Start Time



End Time

How many hours and  
minutes passed?

The elapsed time is

**2 hours and 30 minutes.**