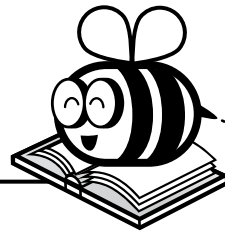


Name: \_\_\_\_\_



## ELA Buzz

Underline the dependent clause in each sentence.

Since Ms. Vo loves the band so much, she camped outside the record store to be first in line.

Neil learned all the lyrics after he



In Greek mythology, Chaos often refers to the state of disordered nothingness that existed before everything else came into being.

Circle the sentence with an adjective that alludes to Greek mythology.

**There was a hectic rush for the doors.**

**It was a chaotic scene inside the store.**



# Preview

Please log in to download  
the printable version of this worksheet.

and Life's a Daydream to play in the car, but Waiting for the Day is the only song I like on either of them.

Read the sentence, then check the box that describes the error in it.

**The fans and the artist are thrilled with the album and the sales prove it.**

- ☐ compound subject/verb disagreement
- ☐ comma missing in a compound sentence
- ☐ clauses incorrectly formatted into a run-on



Name: \_\_\_\_\_



## ELA Buzz

Check the box next to the sentence with no errors.

☐ I nominated and voted for you to win the award.

☐ I nominated, and voted for you to win the award.



Correctly spell the word that matches the pronunciation to complete the sentence.

dĭ-zŭrv

"Please list the three students you think most \_\_\_\_\_ to be recognized for their kindness," Mr. Huff said.

When Abdiel was called on stage to

accept the medal, he was excited to

# Preview

Please log in to download the printable version of this worksheet.

Read the missing apostrophe.

\_\_\_\_\_ The award certificates all have the principals signature on the bottom.

Write something that makes sense to fill in the blank.

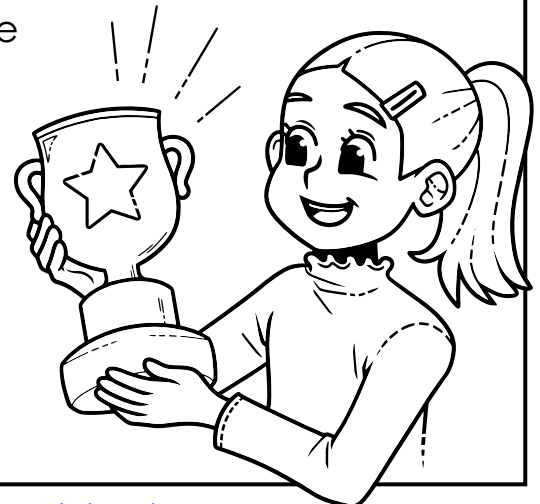
\_\_\_\_\_  
\_\_\_\_\_

Circle the two words that make the sentence a double negative.

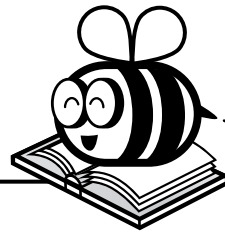
**There isn't nobody who earned this more than you.**

What are **two** ways you can rewrite *only* those words to fix the sentence?

\_\_\_\_\_



Name: \_\_\_\_\_



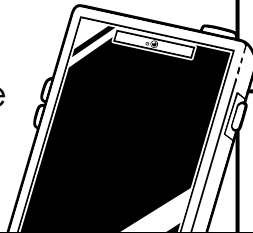
## ELA Buzz

**cereal** – prepared food made of grain

**serial** – arranged in a series; something appearing in many parts

Fill in each blank with the correct homophone.

What is your phone's unique  
\_\_\_\_\_ number?



Complete the sentence by adding a prefix to the base word to match the definition.

**call**

The company has to \_\_\_\_\_  
(call back again)  
400,000 speakers due to shock risks.

Complete each sentence using the correct relative pronoun from the box.



# Preview

Please log in to download  
the printable version of this worksheet.

The second batchs charging ports  
are loose too.

If the products keep having issues,  
\_\_\_\_\_ will buy them?

Identify the error by writing **F** (fragment), **S** (splice), or **R** (run-on) on the line.

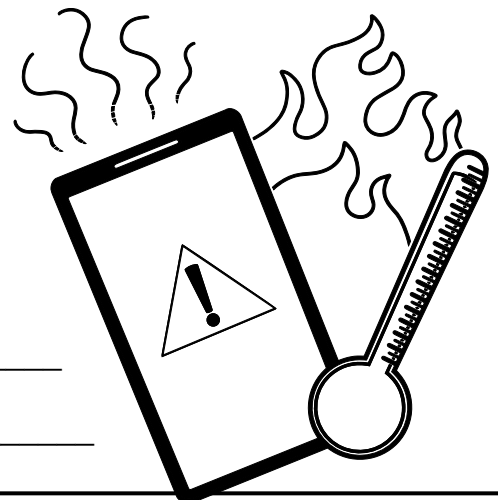
\_\_\_\_\_ Keeps dangerously overheating.

\_\_\_\_\_ Check the lot number it may have a problem.

\_\_\_\_\_ There's a manufacturing error, you can get  
a refund.

Fix the fragment. \_\_\_\_\_

\_\_\_\_\_



Name: \_\_\_\_\_



## ELA Buzz

Hezekiah says the pressure of waiting until the last minute helps him work better, but most people who **procrastinate** end up working more poorly.

What does the bold word mean?

- a. to do work of poor quality
- b. to do something as soon as possible
- c. to knowingly put off doing something



**Don't put off until tomorrow what you can do today.**

Which best describes this saying?

**proverb      idiom      metaphor**

Which best shows it in practice?

- a. putting your clothes away before bed instead of tomorrow morning



# Preview

Please log in to download  
the printable version of this worksheet.

do I do now?"

- ☐ "I finished early," said Mona. "What do I do now?"

in a couple days. (circle)

\_\_\_\_\_

\_\_\_\_\_

Tell what each sentence is by writing **S** (simple), **C** (compound), or **X** (complex) on the line.

- \_\_\_\_\_ The essay will be easy, but I know the presentation will be tricky.
- \_\_\_\_\_ Can I take a break after I finish the science fair poster?
- \_\_\_\_\_ Both the art project and history report are due Friday.



Name: \_\_\_\_\_

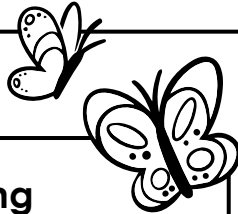
## ELA Buzz



### Spring Queening

By Neal Levin

April has been crowned the Queen,  
all adorned in newborn green.  
Pansy perfume fills the air.  
Tulips pop up everywhere.  
Butterflies and bumblebees  
buzz and flutter in her breeze.  
Songbirds serenade and sing.



Circle the kind of figurative language that appears in the poem.

**personification    hyperbole    simile**

What is it used to describe? \_\_\_\_\_

What is the poem mainly about?

- a. the crowning of a beauty pageant queen
- b. the nature of the spring season



## Preview

Please log in to download  
the printable version of this worksheet.

Circle the correctly ordered adjectives to complete the sentence.

The \_\_\_\_\_ breeze is refreshing.

**cool spring      spring cool**

Circle the word that is correctly divided into syllables.

**bumblebee**

bumb-le-bee      bum-ble-bee

The Greek root **gen** means *birth*.

Circle the correctly spelled word to complete the sentence.

Spring is the season of \_\_\_\_\_.

**rejuvenation      regeneration**

Add punctuation to make the sentence correct. Fill in the blank with the correctly capitalized or uncapitalized letter.

What is the best season \_\_\_\_sked Gus.



Underline the dependent clause in each sentence.

Since Ms. Vo loves the band so much, she camped outside the record store to be first in line.

Circle the sentence with an adjective that alludes to Greek mythology.

There was a hectic rush for the doors.

It was a chaotic scene.

Rewrite the sentence correctly.

Stop ignoring the stores policies; the max is too pur person. (5 errors)

Stop ignoring the store's

Underline the titles of the full-length works. Put quotation marks around the title of the shorter work.

Mom bought the CDs What's Your Wish? and Life's

Check the box that describes the error in the sentence.

The fans and the artist are thrilled with the album and the sales prove it.

☐ compound subject/verb disagreement

# Preview

Please log in to download the printable version of this worksheet.



Circle the figurative language that appears in the poem.

personification

What is it used to describe? April

What is the poem mainly about?

b. the nature of the spring season

Circle the three senses addressed by imagery in the poem.

sight

smell

hearing

Circle the correctly ordered adjectives to complete the sentence.

The \_\_\_\_\_ breeze is refreshing.

cool spring spring cool

The Greek root **gen** means **birth**.

Circle the correctly spelled word to complete the sentence.

Spring is the season of \_\_\_\_\_.

rejuvenation regeneration

Circle the word that is correctly divided into syllables.

**bumblebee**

bumb-le-bee bum-ble-bee

Add punctuation to make the sentence correct. Fill in the blank with the correctly capitalized or uncapitalized letter.

"What is the best season?" asked Gus.