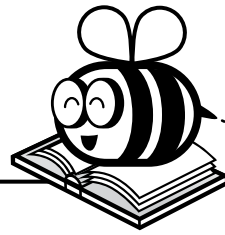


Name: _____



ELA Buzz

Fill in the blank with the correct possessive noun.

_____ (Mateo)

piggy bank is in the shape of a football.



Rewrite the sentence correctly.

A picture of George washington is on the doller bill. **3 errors**

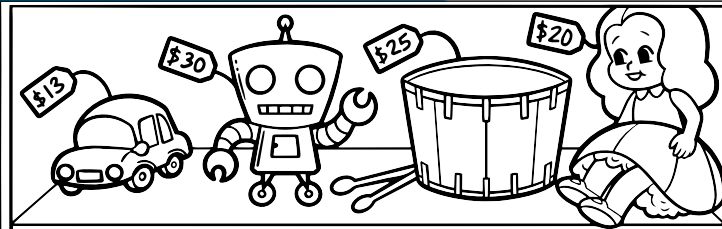
Complete the sentences with the correct words.

Put a check next to the sentence with no mistakes. Circle the errors in



Preview

Please log in to download the printable version of this worksheet.



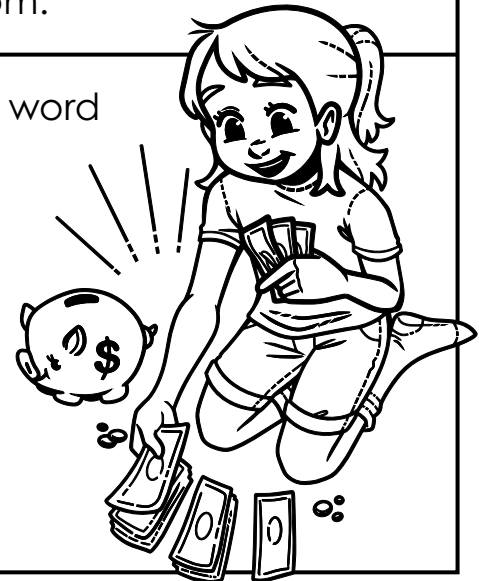
☐ The bank's hours are 9:00 am to 4:00 pm.

☐ The bank's hours are 9:00 am to 4:00 pm.

Complete each sentence using a pronoun to replace the word or words in parentheses. Then tell whether the pronoun is singular or plural.

_____ went to the bank to open a new account. (Mom and Dad) _____

_____ saves all the money she earns from babysitting. (Elize) _____



Name: _____



ELA Buzz

Draw a line to show where the complete subject ends and the complete predicate begins.

Mr. Lee's **intricate** garden has a koi pond and many benches to sit on.

What part of speech is the bold



Add the suffix *-ful* to the word in parentheses to make an adverb.

Vegetables are a

(plenty)

source of
vitamins.

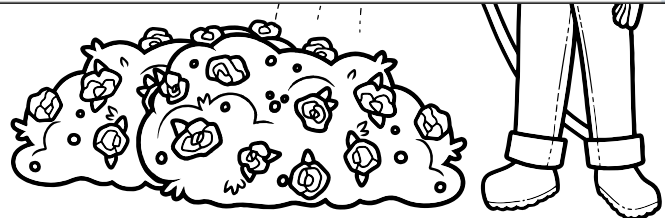


Preview

Please log in to download
the printable version of this worksheet.

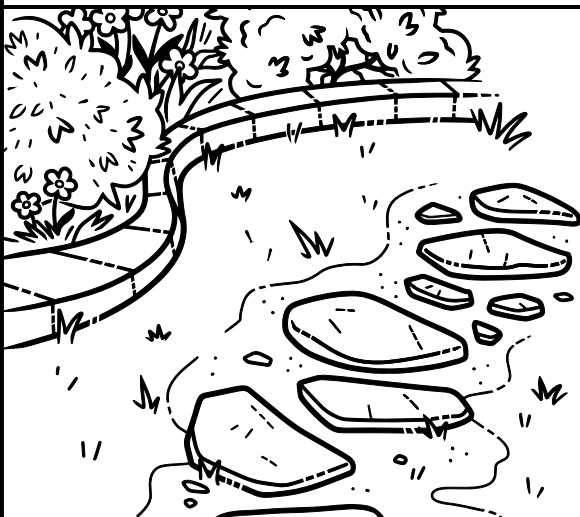
the sentence.

Can you please mow the lawn Dad
asked Mateo



Rewrite the sentence correctly.

The walkway throuh the gardin is made with
pebles? (4 errors)



Name: _____



ELA Buzz

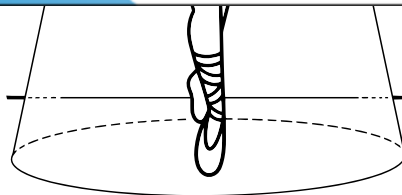
Fill in the blank with the correct possessive noun.

"The _____ doors
(theater)
open in five minutes!" announced the director.

Circle the adjective that best completes the sentence.



The _____
lights shined
on the stage.



Circle the misspelled word. Then write it correctly on the line below.

Lucy has stage
frite, so her mom
told her to picture
the audience in
their underwear!



Preview

Please log in to download
the printable version of this worksheet.

curtin

staeg

Rewrite the sentence correctly.

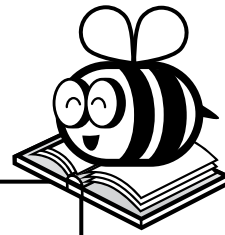
Did you buy ticket's for the show Charlie asked.

4 errors



Name: _____

ELA Buzz



Rewrite the sentence in the past tense.

Ahmed and Eliza are playing cards.



Add quotation marks and a comma where needed to make the sentence correct.

It's my turn next
said Illiana.

Circle the pronoun in each sentence. Then tell whether



Preview

Please log in to download
the printable version of this worksheet.

Complete each sentence with
the best word.

ate

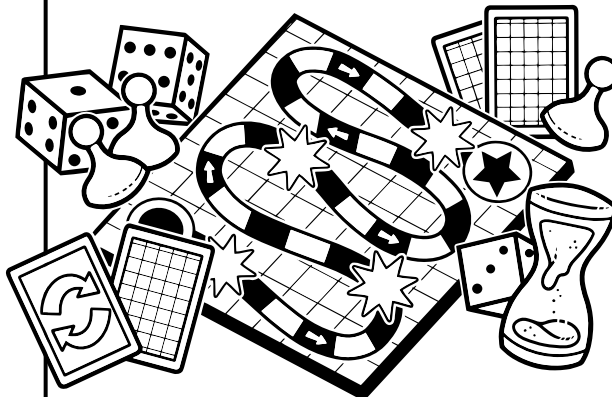
eight

Amar needs to roll an
_____ to win the
game.

They _____ snacks
while they played board
games.

Circle the best word or phrase that correctly
completes the sentence.

Brett _____ explained all the
rules of the game.



careful

carefully

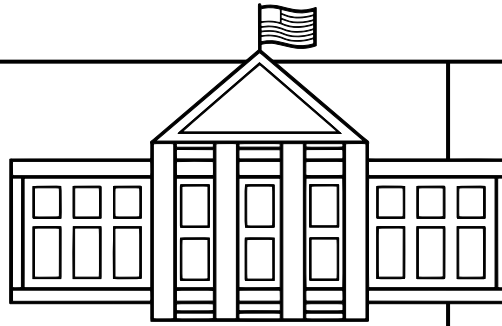
most careful

Name: _____



ELA Buzz

The White House has been a symbol of the presidency for over 200 years. The White House began construction in 1792 and finished in 1800. George Washington did not live in the White House, but he did oversee the construction of it. John Adams and his family were the first presidential family to live in the White House.



Add quotation marks and a comma where needed to make the sentence correct.

We are taking a tour of the White House said Sam.

Circle the contraction. Then write the two words it is short for.



Preview

Please log in to download the printable version of this worksheet.

The White House is home to the president. What are two other uses of the White House?

Reread the sentence from the passage.

George Washington did not live in the White House, but he did **oversee** the construction of it.

What is the best meaning of the bold word?

- a.** look at **b.** manage **c.** build

Circle the four letters that should be capitalized.

john adams was the first president to live in the white house.

Circle the misspelled word. Write it correctly on the line.

The White House is a simble of the presidency.

Fill in the blank with the correct possessive noun.

Mateo's

(Mateo)

_____ piggy bank is in the shape of a football.

Rewrite the sentence correctly.

A picture of George Washington is on the dollar bill. (3 errors)

A picture of George

Complete the sentences with the correct words.

more most

That toy is the most expensive.

Put a check next to the sentence with no mistakes. Circle the errors in the other sentences.

☐ The banks hours are 9:00 am to 4:00 pm.

☐ The bank's hours our 9:00 am

Complete each sentence using a pronoun to replace the word or words in parentheses. Then tell whether the pronoun is singular or plural.

They went to the bank to open a new account. (Mom and Dad)

Preview

Please log in to download the printable version of this worksheet.



How long did it take to build the White House? 8 years

What are two other uses of the White House?

It has offices for government workers and it's a museum for tourists.

George Washington did not live in the White House, but he did **oversee** the construction of it.

What is the best meaning of the bold word?

(b. manage)

Add quotation marks and a comma where needed to make the sentence correct.

"We are taking a tour of the White House," said Sam.

Circle the contraction. Then write the two words it is short for.

The White House isn't just a home for the president and his family.

is not

Circle the four letters that should be capitalized.

John Adams was the first president to live in the White House.

Circle the misspelled word. Write it correctly on the line.

The White House is a simple of the presidency.

symbol