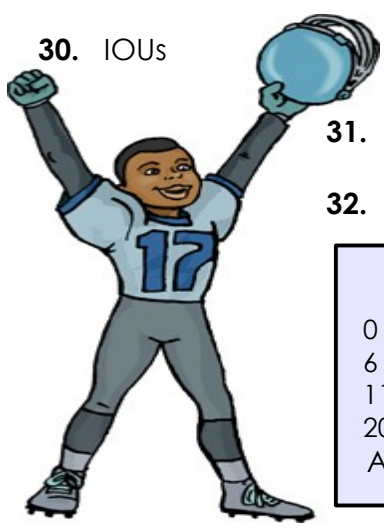


Football Brain Strainers



- 16. credit card users 16. _____
- 17. cattle drivers 17. _____
- 18. army insects 18. _____
- 19. thieves 19. _____
- 20. grizzlies 20. _____
- 21. kings of the jungle 21. _____
- 22. suitcase stuffers 22. _____
- 23. six roman rulers 23. _____
- 24. peregrine birds of prey 24. _____
- 25. pink cartoon detectives 25. _____
- 26. Patrick and Valentine 26. _____
- 27. used to be girls 27. _____
- 28. red birds 28. _____
- 29. Dodge trucks 29. _____
- 30. IOUs 30. _____



- 31. ocean birds 31. _____
- 32. bald bird 32. _____

How many did you answer correctly?

0 - 5: You fumbled the puzzle.
 6 - 10: Number one fan.
 11 - 19: You made the starting lineup!
 20 - 31: Star quarterback!
 All 32: Super Bowl MVP!

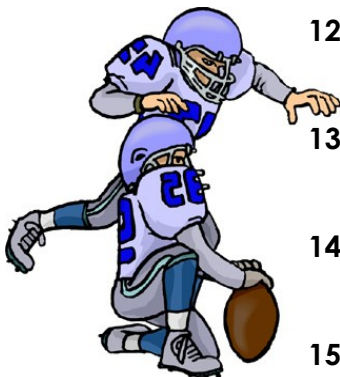


Football Brain Strainers

Can you figure out which professional football team each clue refers to?



- | | |
|-------------------------------|------------------------------------|
| 1. seven squared | 1. <u>49ers</u> |
| 2. marine mammals | 2. <u>Dolphins</u> |
| 3. proud Americans | 3. <u>Patriots</u> |
| 4. 747s | 4. <u>Jets</u> |
| 5. black birds | 5. <u>Ravens</u> |
| 6. dollar for corn | 6. <u>Buccaneers (buck an ear)</u> |
| 7. sunburned people | 7. <u>Redskins</u> |
| 8. suntanned people | 8. <u>Browns</u> |
| 9. Lone Star State residents | 9. <u>Texans</u> |
| 10. young male horses | 10. <u>Colts</u> |
| 11. expensive British cars | 11. <u>Jaguars</u> |
| 12. Greek mythological giants | 12. <u>Titans</u> |
| 13. rodeo horses | 13. <u>Broncos</u> |
| 14. Native American leaders | 14. <u>Chiefs</u> |
| 15. hostile attackers | 15. <u>Raiders</u> |



Football Brain Strainers

16. credit card users

17. cattle drivers

18. army insects

19. thieves

20. grizzlies

21. kings of the jungle

22. suitcase stuffers

23. six roman rulers

24. peregrine birds of prey

25. pink cartoon detectives

26. Patrick and Valentine

27. used to be girls

28. red birds

29. Dodge trucks

30. IOUs

31. ocean birds

32. bald bird

16. Chargers

17. Cowboys

18. Giants (G.I. Ants)

19. Steelers

20. Bears

21. Lions

22. Packers

23. Vikings (VI Kings)

24. Falcons (peregrine falcons)

25. Panthers (Pink Panther)

26. Saints

27. Bengals (been gals)

28. Cardinals

29. Rams

30. Bills

31. Seahawks

32. Eagles



How many did you answer correctly?

0 - 5:	You fumbled the puzzle.
6 - 10:	Number one fan.
11 - 19:	You made the starting lineup!
20 - 31:	Star quarterback!
All 32:	Super Bowl MVP!

