

Football Brain Strainers



Can you figure out which professional football team each clue refers to?

- | | |
|--------------------|----------|
| 1. seven squared | 1. _____ |
| 2. marine mammals | 2. _____ |
| 3. proud Americans | 3. _____ |
| 4. 747s | 4. _____ |
| 5. black birds | 5. _____ |



Preview

Please log in to download the printable version of this worksheet.

- | | |
|------------------------------|-----------|
| 9. Lone Star State residents | 9. _____ |
| 10. young male horses | 10. _____ |
| 11. expensive British cars | 11. _____ |



- | | |
|-------------------------------|-----------|
| 12. Greek mythological giants | 12. _____ |
| 13. rodeo horses | 13. _____ |
| 14. Native American leaders | 14. _____ |
| 15. hostile attackers | 15. _____ |

Football Brain Strainers



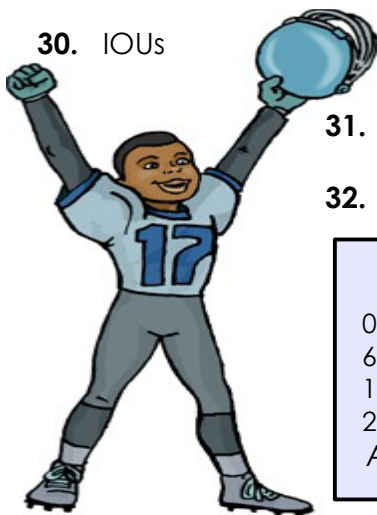
- 16. credit card users 16. _____
- 17. cattle drivers 17. _____
- 18. army insects 18. _____
- 19. thieves 19. _____



Preview

Please log in to download the printable version of this worksheet.

- 24. peregrine birds of prey 24. _____
- 25. pink cartoon detectives 25. _____
- 26. Patrick and Valentine 26. _____
- 27. used to be girls 27. _____
- 28. red birds 28. _____
- 29. Dodge trucks 29. _____
- 30. IOUs 30. _____



- 31. ocean birds 31. _____
- 32. bald bird 32. _____

How many did you answer correctly?

- 0 - 5: You fumbled the puzzle.
- 6 - 10: Number one fan.
- 11 - 19: You made the starting lineup!
- 20 - 31: Star quarterback!
- All 32: Super Bowl MVP!



Football Brain Strainers

Can you figure out which professional football team each clue refers to?

1. seven squared

1. **49ers**



Preview

Please log in to download
the printable version of this worksheet.



15. hostile attackers

15. **Raiders**

Football Brain Strainers

16. credit card users

16. **Chargers**



Preview

Please log in to download
the printable version of this worksheet.



32. bald bird

32. **Eagles**

How many did you answer correctly?

- | | |
|----------|-------------------------------|
| 0 - 5: | You fumbled the puzzle. |
| 6 - 10: | Number one fan. |
| 11 - 19: | You made the starting lineup! |
| 20 - 31: | Star quarterback! |
| All 32: | Super Bowl MVP! |

