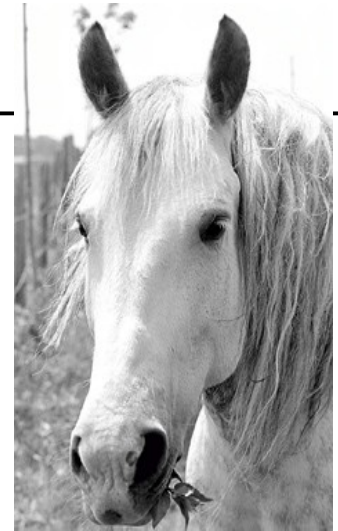


Name: _____

Leaving Her Mark

A True Story, Retold by Liana Mahoney



Wherever she goes, Molly leaves her mark. Without saying a word, she speaks to people with her kind eyes. Even when she walks away, she leaves an impression. Molly's mark is a smile, stamped into the ground by the horseshoe at the bottom of her false leg.

A few years ago, Molly, a pony, was badly attacked by a dog. The dog bit all four of Molly's legs and left large gashes in her face. Molly's owner, Kaye Harris, took her to an animal hospital. Veterinarians there were able to save Molly's life, but soon one of her legs became very infected. The only way to save her life was to amputate, or r

At first, Molly changed time. Doctors l Several



~ PREVIEW ~
Please log in or register to download the printable version of this worksheet.

sleep. But y from time to ed a

prosthesis (pros-THÉE-sis) was made for her. Molly's prosthesis was a hollow cast with a pole at the bottom for balance. Doctors gave Molly a special horseshoe at the bottom of her prosthesis. This horseshoe had a stamp of a smile face in it!

After the operation, Molly walked around on all four legs, as if nothing had ever happened to her! Now, with every step she takes, she stamps a smile in the dirt. But she leaves her mark in other ways, too.

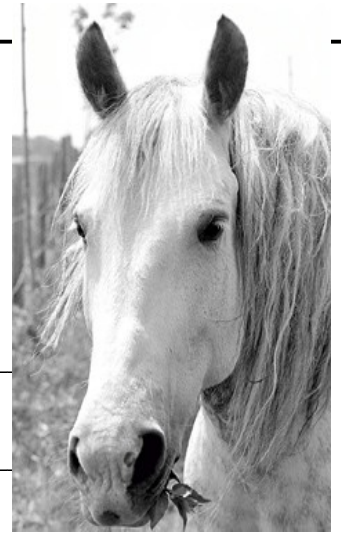
Kaye Harris took Molly to the prosthesis center. There were children there who, like Molly, had artificial limbs. They were amazed to see a pony with a prosthetic leg. Molly made them smile and gave them hope. Soon, Molly began to visit schools, nursing homes, army bases, and hospitals. A book was even written about Molly!

Molly has become a symbol of hope for people of all ages. Her story leaves a smile on people's faces, just as clearly as her horseshoe leaves a mark in the sand.

Name: _____

Leaving Her Mark

A True Story, Retold by Liana Mahoney



1. Explain why Molly has a false leg.

2. Draw lines to match each word with its definition.

prosthesis

to remove a body part

euthanize

an artificial body part

veterin

amput

limb

PREVIEW

Please log in or register to download the printable version of this worksheet.

3. What is unique about the horseshoe at the bottom of Molly's false leg?

4. What did Molly do after she got her artificial limb?

a. She ran a race.

b. She visited schools and hospitals.

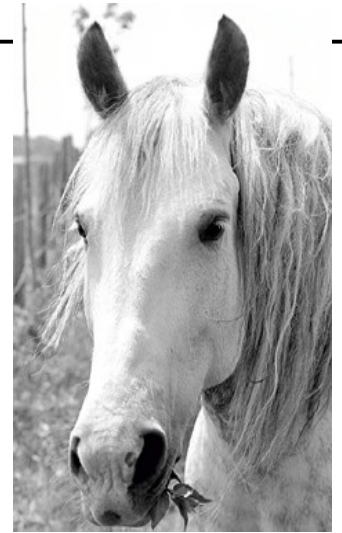
c. She moved into a petting zoo

d. She gave rides to young children.

5. Explain why this story is titled, "Leaving Her Mark."

Leaving Her Mark

A True Story, Retold by Liana Mahoney



1. Explain why Molly has a false leg.

Molly has a false leg because she was attacked by a dog. One of her legs got infected and it had to be removed.

2. Draw lines to match each word with its definition.

prosthesis	to remove a body part
amputate	an artificial body part
limb	to put to sleep; to kill
veterinarian	an artificial body part
amputate	to put to sleep; to kill
limb	to remove a body part

amputate

limb



~ PREVIEW ~

Please log in or register to download the printable version of this worksheet.

3. What is u

Molly's horseshoe is shaped like a smile face.

4. What did Molly do after she got her artificial limb? **b**
- | | |
|---------------------------------|----------------------------------------------|
| a. She ran a race. | b. <u>She visited schools and hospitals.</u> |
| c. She moved into a petting zoo | d. She gave rides to young children. |
5. Explain why this story is titled, "Leaving Her Mark."

Whenever Molly walks, she her smile-faced horseshoe leaves an imprint in the sand. Because it is different from most horseshoes, it is Molly's unique mark that inspires people.