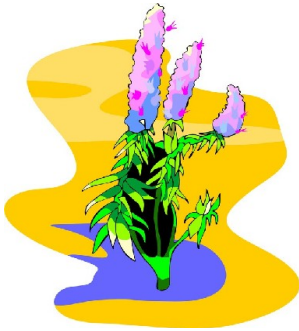


Name: \_\_\_\_\_

# Desert Flower Power

by Alice Knisley Matthias



Xerophytes are plants that are at their best,  
Growing in regions like the dry Northwest.  
Desert flowers know how they can survive;  
They'll not only grow, they're certain to thrive.



**~ PREVIEW ~**

Please log in or register to download  
the printable version of this worksheet.

d,



Primroses and asters, poppies and lupine,  
Live in the desert's blazing, hot sunshine.  
These plants all learned what they needed to know,  
To live in a place where others can't grow.

Name: \_\_\_\_\_

# Desert Flower Power

by Alice Knisley Matthias



1. What is this poem about?

---

---

2. Line 4 reads:

*They'll not only grow, they're certain to thrive.*

Define the word thrive. Use a dictionary if you need help.



3. How h

- a. Their roots hold extra water underground so the plant can survive.
- b. They do not have roots to take in water.
- c. Their roots are very shallow to absorb more water.
- d. Their roots go deep into the earth, where there is more water.

4. Create a new, appropriate title for this poem.

Do not use the words desert, flower, or power in your new title.

---

**Something extra:** With a parent or teacher, use the Internet to look up the words Xerophyte and Phreatophyte. On a separate sheet of paper, tell how they are the same and how they are different.

Name: \_\_\_\_\_



# Desert Flower Power

Poem by Alice Knisley Matthias

Personification is when a writer makes a plant, animal or object seem like a human.

Here is one example of personification, from line 3 of the "Desert Flower Power" poem:

*Desert flowers know how they can survive.*

Of course, desert flowers don't have brains, so they can't really know things. The writer uses the word know to make the plants seem like they have human qualities.

There is one other line with personification. (Hint: It's in the last 4 lines of the poem.)

Find it, and copy it.

\_\_\_\_\_

Explain why this is personification.

\_\_\_\_\_



**~ PREVIEW ~**

**Please log in or register to download the printable version of this worksheet.**

Read each sentence below. Tell which sentences show personification.

Write personification or not personification on the lines.

1. \_\_\_\_\_ The trees were dancing in the wind.
2. \_\_\_\_\_ The light was brightly shining.
3. \_\_\_\_\_ The water sang as it crashed against the rocks.
4. \_\_\_\_\_ My computer died last night.
5. \_\_\_\_\_ The wooden table had beautiful shapes carved into it.

**Something extra:** Write your own poem about something that is not alive. Include an example of personification to give it human-like qualities.

Name: \_\_\_\_\_

# Desert Flower Power

Poem by by Alice Knisley Matthias



Possible related activities:

1. There's another personification poem, and personification activity on Super Teacher Worksheets. The link is:  
<http://www.superteacherworksheets.com/reading-comp/4th-personification.pdf>

2. Have students use an encyclopedia to look up the words:  
primrose, aster, poppy, and lupine

Student

3. Student  
They c



4. Many department stores, grocery stores, and nurseries sell small cactus plants for only a few dollars. Purchase one for your classroom. Have students take care of it. They could also write a descriptive paragraph to describe it.

If you do bring a cactus into the classroom, have students predict what the roots will be like. (Will they be shallow or deep?) Then, put on some thick garden gloves and carefully pull it out of the pot to check their hypothesis.

5. Have students use an atlas or other reference material to find the largest deserts in the world. Students can make a list of their names and locations. You may also want to have them list the annual rainfall or average summer temperature.

## ANSWER KEY

# Desert Flower Power

by Alice Knisley Matthias



1. What is this poem about?

It's about plants that have adapted to live in dry climates.

2. Line 4 reads:

*They'll not only grow, they're certain to thrive.*

Define the word thrive. Use a dictionary if you need help.

In the case of plants, thrive means to be extremely healthy and able to grow easily.

More c

3. How h

A red-bordered box containing a cartoon superhero character on the left, wearing a red suit and cape, flying. To the right of the character, the word "PREVIEW" is written in large, bold, red letters with a black outline. Below the word, the text reads: "Please log in or register to download the printable version of this worksheet." The entire box is set against a white background.

**PREVIEW**  
Please log in or register to download  
the printable version of this worksheet.

c. Their roots are very shallow to absorb more water.

d. Their roots go deep into the earth, where there is more water.

4. Create a new, appropriate title for this poem.

Do not use the words desert, flower, or power in your new title.

Answers will vary.

Possible answer: Successful Plants in Dry Climates

**Something extra:** With a parent or teacher, use the Internet to look up the words Xerophyte and Phreatophyte. On a separate sheet of paper, tell how they are the same and how they are different.

## ANSWER KEY

# Desert Flower Power

Poem by by Alice Knisley Matthias



Personification is when a writer makes a plant, animal or object seem like a human.

Here is one example of personification, from line 3 of the “Desert Flower Power” poem:

*Desert flowers know how they can survive.*

Of course, desert flowers don't have brains, so they can't really know things. The writer uses the word know to make the plants seem like they have human qualities.

There is one other line with personification. (Hint: It's in the last 4 lines of the poem.)

Find it, and c

These

Explain why th

Plants

A red-bordered box containing a cartoon superhero character flying through the air. To the right of the character, the word "PREVIEW" is written in large, bold, red letters with a black outline. Below the word, there is a line of text: "Please log in or register to download the printable version of this worksheet." The entire box is set against a white background.

**PREVIEW**  
Please log in or register to download the printable version of this worksheet.

Read each sentence below. Tell which sentences show personification.

Write personification or not personification on the lines.

- personification**      The trees were dancing in the wind.
- not personification**      The light was brightly shining.
- personification**      The water sang as it crashed against the rocks.
- personification**      My computer died last night.
- not personification**      The wooden table had beautiful shapes carved into it.

**Something extra:** Write your own poem about something that is not alive. Include an example of personification to give it human-like qualities.