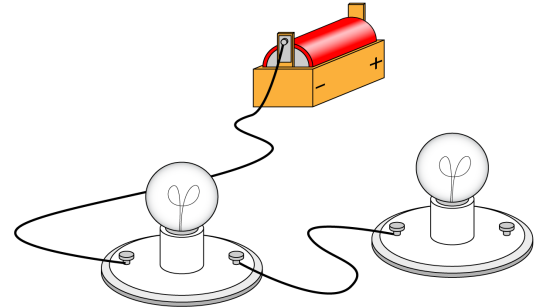


Name: \_\_\_\_\_

# What's Wrong With These Circuits?

1. Explain why the light bulbs won't light in the circuit pictured on the right.



---

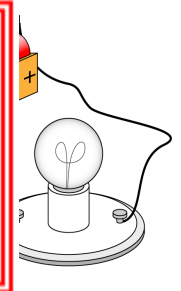
---

---

---

2. Explain why the light bulb isn't lighting up in the circuit pictured on the right.

 **~ PREVIEW ~**  
Please log in or register to download the printable version of this worksheet.



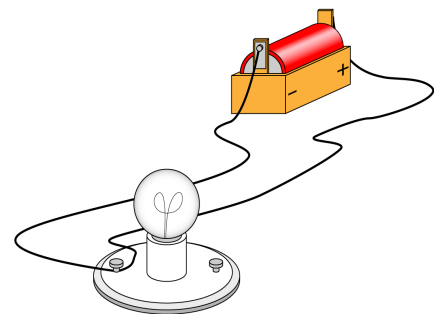
---

---

---

---

3. Explain why the light bulb isn't lighting up in the circuit pictured on the right.



---

---

---

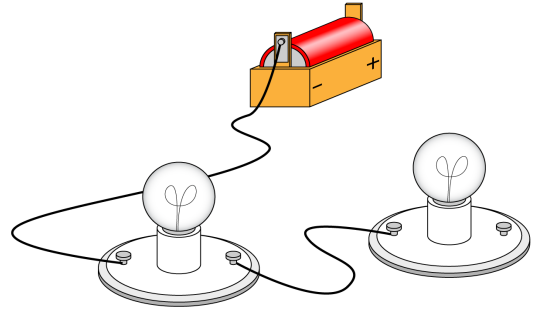
---

# ANSWER KEY

## What's Wrong With These Circuits?

1. Explain why the light bulbs won't light in the circuit pictured on the right.

The circuit does not have a wire that returns to the current to the battery's positive terminal.

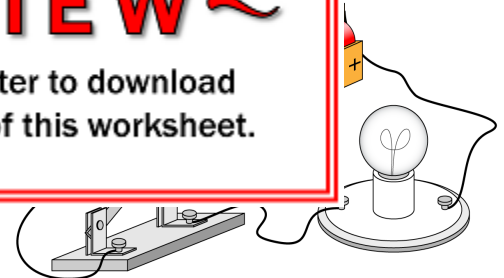


2. Explain why the light bulb is not lit in the circuit pictured on the right.

The switch is not closed, so the circuit is not complete.

**~ PREVIEW ~**

Please log in or register to download the printable version of this worksheet.



3. Explain why the light bulb isn't lighting up in the circuit pictured on the right.

The electricity isn't flowing through the bulb and socket. One of the wires needs to be connected to the other terminal of the light socket.

