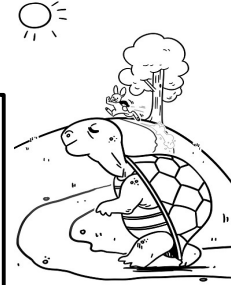


## Typing Activity

Below is a box with 10 of your spelling words in it. Use a computer word processor to type 10 sentences. Each sentence should have a spelling word in it.

### Word Box

- |             |             |             |             |            |
|-------------|-------------|-------------|-------------|------------|
| 1. slowly   | 2. powerful | 3. useful   | 4. truthful | 5. quickly |
| 6. painless | 7. friendly | 8. thankful | 9. careful  | 10. calmly |



**Step 1: Write sentences with your spelling words in them.**

- Type your name at the top of the page.
- Use each word in a complete sentence.
- Each sentence should have at least six words in it.



# Preview

Please log in to download the printable version of this worksheet.

with a punctuation mark.

- Check to make sure you underlined each spelling word.
- Be sure each sentence has six or more words in it.
- Check to make sure you numbered your sentences and typed your name at the top of the page.

**Step 3: Adjust the font and size.**

- Choose a basic font that is easy to read, such as Arial or Verdana.
- Your font size should be between 12 and 16 point.

**Step 4: Save or print your file, as per your teacher's instructions.**

# Teacher Notes

- For this activity, you can use any word processor, such as Microsoft Word or OpenOffice, or GoogleDocs.
- We suggest you disable automatic numbering. It can be confusing for students.



Student has chosen a font size and style that is easy to read.

\_\_\_\_\_ / 5

Student has successfully saved or printed the file, as per the teacher's instructions.

\_\_\_\_\_ / 100

total score

Comments:

---

---