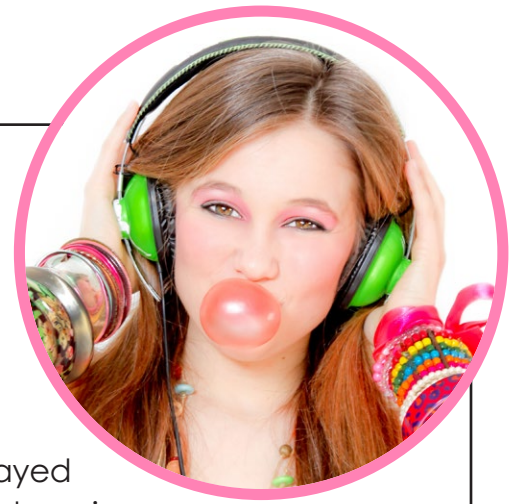


Name: _____



A POP!-ULAR INVENTION

By Kelly Hashway

Did you know that the invention of chewing gum was an accident? People have been chewing gum-like substances since the early times. Some were made from thickened resin, a substance that comes from plants. Others were made from grains and waxes. But chewing gum, as we know it today, was invented by mistake in 1870 when Thomas

Santa Anna stayed with Thomas Adams in New York and introduced him to a gummy substance people in Mexico liked to chew called chicle. Chicle was the milky sap from sapodilla trees that grew in the tropical rain forests in Central America. Adams wanted to use the chicle to invent a cheaper substitute for rubber. He tried



Preview

Please log in to download the printable version of this worksheet.

licorice flavor to the chicle and opened the world's first chewing gum factory.

Much like Adams's discovery of chewing gum, the invention of bubble gum was also an accident. In 1928, Walter Diemer, an accountant for the Flee Gum Company in Philadelphia, stumbled upon the invention while experimenting with new recipes for chewing gum. Diemer created a gum that was less sticky and more stretchy than regular chewing gum. Diemer learned he could blow bubbles with this new gum.

Accidents or not, chewing gum and bubble gum are two inventions that people across the globe pop over!



Name: _____



A POP!-ULAR INVENTION

By Kelly Hashway

1. What is chicle made from?
 - a. rubber
 - b. licorice
 - c. tree sap
 - d. tropical fruits
2. When Santa Anna defeated the Texans, he was exiled from Mexico. What does the word exiled mean?



Preview

Please log in to download the printable version of this worksheet.

- _____ Antonio Lopez de Santa Anna comes to New York and stays with Thomas Adams.
- _____ Adams tries to make toys and boots out of chicle.
- _____ Santa Anna introduces Thomas Adams to chicle.
- _____ Adams opened the first chewing gum factory in the world.
- _____ Walter Diemer invents bubble gum.

4. Explain why the invention of chewing gum is considered an accident.

ANSWER KEY



A POP!-ULAR INVENTION

By Kelly Hashway

1. What is chicle made from?
 - a. rubber
 - b. licorice
 - c. tree sap**
 - d. tropical fruits
2. When Santa Anna defeated the Texans, he was exiled from Mexico. What does the word exiled mean?



Preview

Please log in to download the printable version of this worksheet.

- 1st Antonio Lopez de Santa Anna comes to New York and stays with Thomas Adams.
 - 3rd Adams tries to make toys and boots out of chicle.
 - 2nd Santa Anna introduces Thomas Adams to chicle.
 - 5th Adams opened the first chewing gum factory in the world.
 - 6th Walter Diemer invents bubble gum.
4. Explain why the invention of chewing gum is considered an accident.

Adams was trying to invent an artificial rubber substance when he tried chicle and realized it would make great gum.

ANSWER KEY

A POP!-ULAR INVENTION

Vocabulary Activity

Part 1. Reread "A Pop!-ular Invention" by Kelly Hashway. As you read highlight the following vocabulary words in the story.

resin	exiled	tropical	contemplate
licorice	accountant	defeated	

Part 2. Match each vocabulary word on the left with its definition on the right.

g 1. resin

a. to concentrate or engage in deep thought

e 2. exiled

b. flavor from a plant used in food



Preview

Please log in to download
the printable version of this worksheet.

c 7. defeated

g. clear, yellowish, or brownish substance that
oozes from certain trees; sap

Part 3. Use a vocabulary word from the list to complete each sentence.

- Henry didn't like snow, so he moved to a place with a tropical climate.
- If you would like a job as an accountant, you should have excellent math skills.
- The Buffalo Sabres hockey team defeated the Boston Bruins.
- The chess player sits quietly and tries to contemplate his next move.
- Black, licorice - flavored gumdrops are my favorite.