

# Phonics Short-A and Long-A Scavenger Hunt Activity

## Materials:

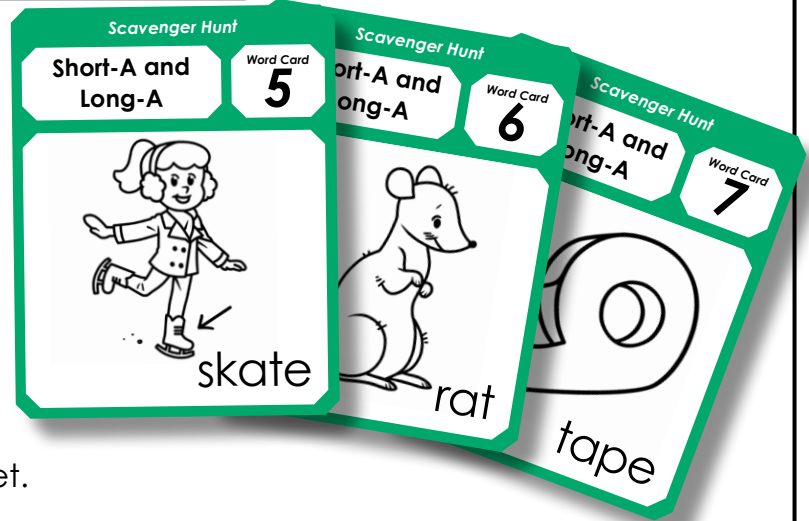
Scavenger hunt worksheet (page 2)  
15 Phonics short-a and long-a word cards (pages 3-6)  
Scissors and scotch tape

## Preparation

Print the word cards on card stock or brightly-colored paper and cut them apart along the dotted lines.

Make copies of the scavenger hunt worksheet.  
Each student will need his or her own copy.

Hide the 15 word cards around your classroom where students will be able to find them. You can put them on chairs, on the pencil sharpener, on the back of your classroom door,



4. Write  $\check{a}$  or  $\bar{a}$  to tell which vowel sound is in the word.

## Management tips

1. You can have the kids work by themselves or with partners.
2. Don't be afraid to hide the facts in tough places. Kids think it's more fun when they have to search around a little.

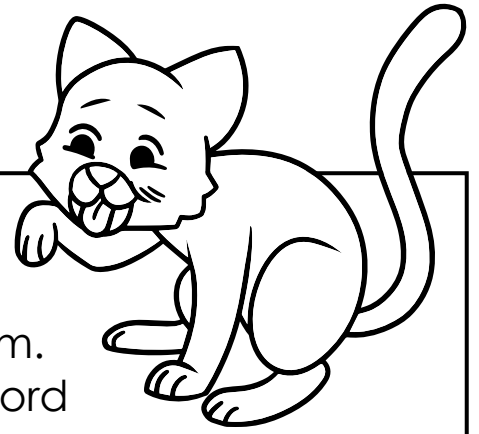
### Examples of good hiding spots might include:

- sticking out of a book, like a bookmark
- the back of the classroom door
- laying flat on the bookshelf
- on the back of the teacher's chair
- on the side of your computer monitor

3. Have a plan for students who finish early. You may want to have an assignment for them to complete when they're done, or you may have them help other students find Word Cards.

Name: \_\_\_\_\_

# Phonics Short-A and Long-A Scavenger Hunt Activity



Find the short-a and long-a words in your classroom. Write the words on this page. Tell whether each word has the *ă* (short-a) or *ā* (long-a) sound

Card 1: \_\_\_\_\_  
word                      *ă* or *ā*

Card 2: \_\_\_\_\_  
word                      *ă* or *ā*

**Preview**  
Please log in to download the printable version of this worksheet.

Card 7: \_\_\_\_\_  
word                      *ă* or *ā*

Card 8: \_\_\_\_\_  
word                      *ă* or *ā*

Card 9: \_\_\_\_\_  
word                      *ă* or *ā*

Card 10: \_\_\_\_\_  
word                      *ă* or *ā*

Card 11: \_\_\_\_\_  
word                      *ă* or *ā*

Card 12: \_\_\_\_\_  
word                      *ă* or *ā*

Card 13: \_\_\_\_\_  
word                      *ă* or *ā*

Card 14: \_\_\_\_\_  
word                      *ă* or *ā*

Card 15: \_\_\_\_\_  
word                      *ă* or *ā*

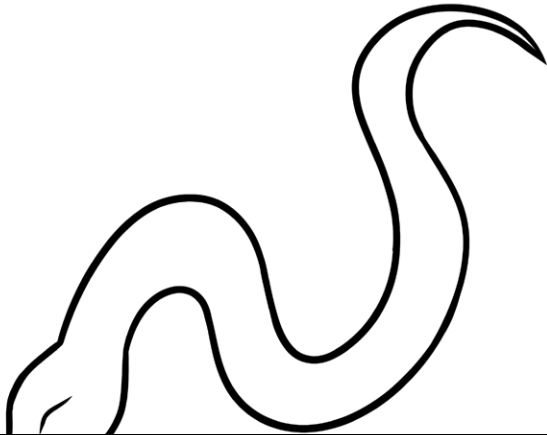


Scavenger Hunt

Short-A and Long-A

Word Card

1

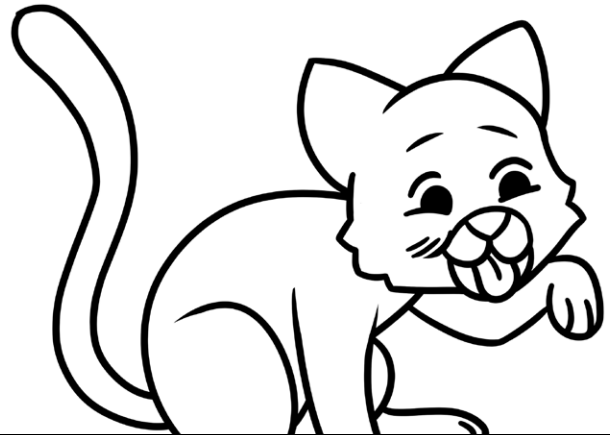


Scavenger Hunt

Short-A and Long-A

Word Card

2



Preview

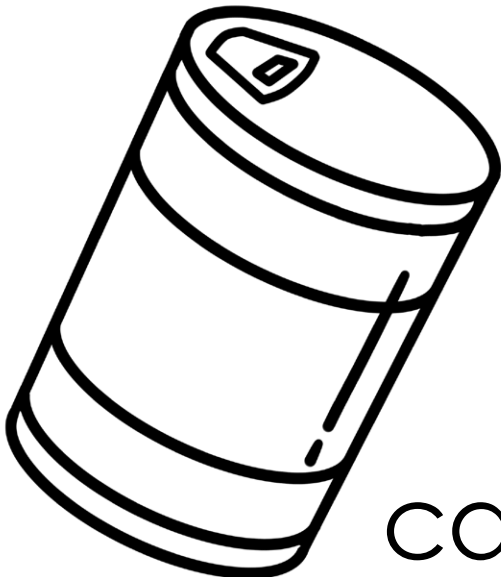
Please log in to download the printable version of this worksheet.

Long-A

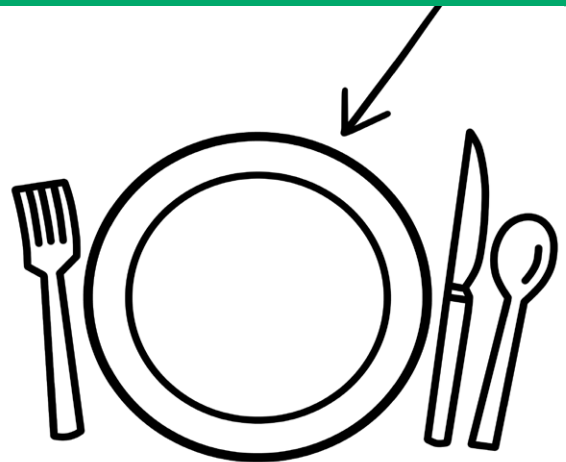
3

Long-A

4



can



plate



Scavenger Hunt

Short-A and Long-A

Word Card

5



Scavenger Hunt

Short-A and Long-A

Word Card

6



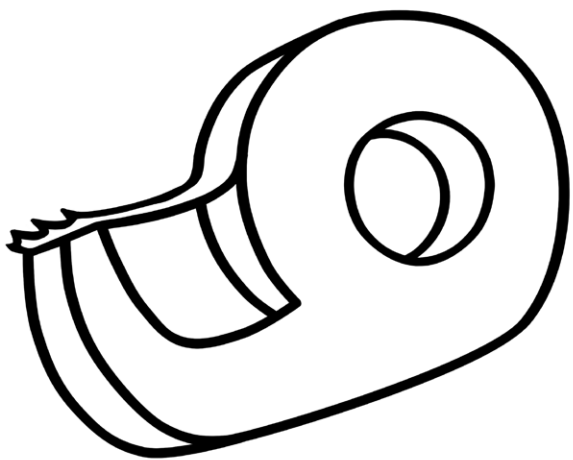
Preview

Please log in to download the printable version of this worksheet.

Long-A



Long-A



tape



hand

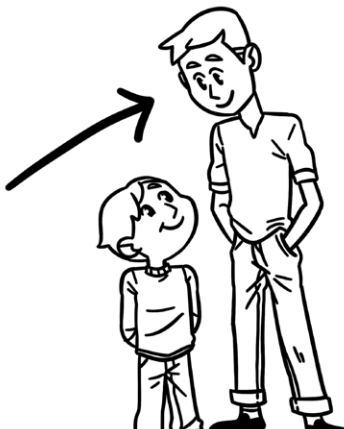


### Scavenger Hunt

Short-A and  
Long-A

Word Card

9

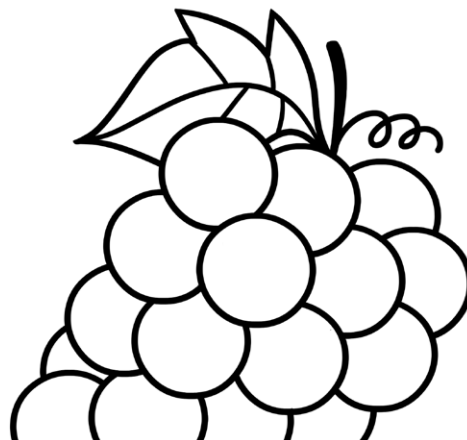


### Scavenger Hunt

Short-A and  
Long-A

Word Card

10



# Preview

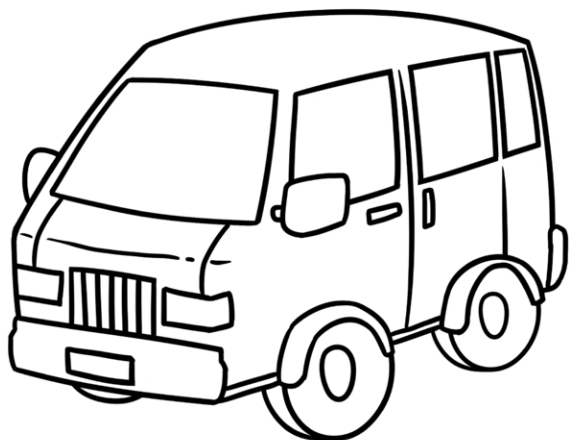
Please log in to download  
the printable version of this worksheet.

Long-A

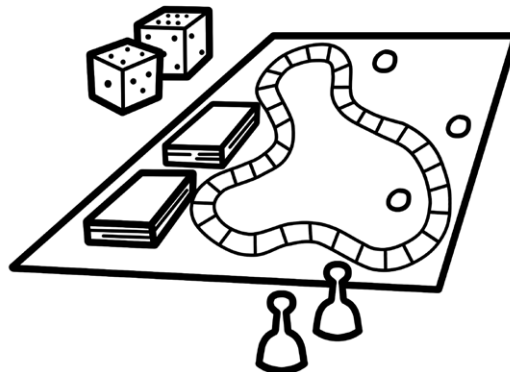
11

Long-A

12



van



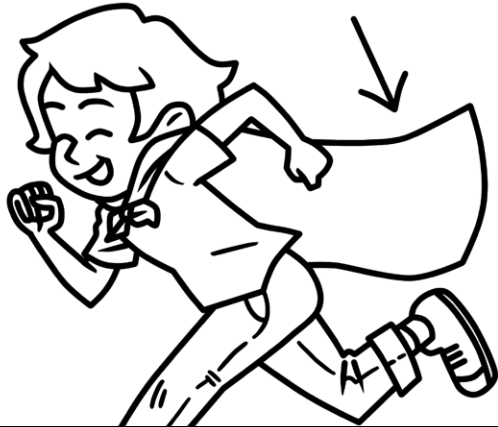
game



Scavenger Hunt

Short-A and  
Long-A

Word Card  
**13**



Scavenger Hunt

Short-A and  
Long-A

Word Card  
**14**

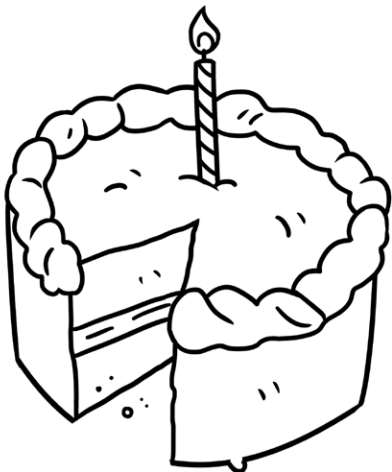


**Preview**

Please log in to download  
the printable version of this worksheet.

Long-A

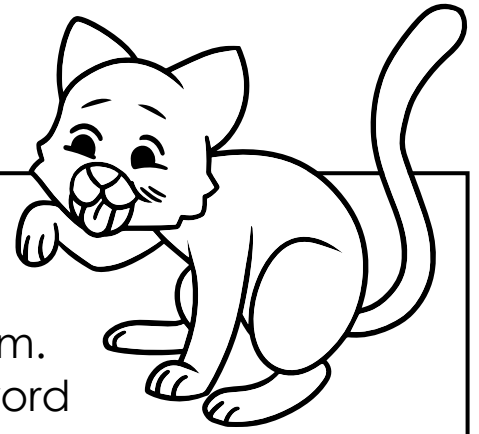
**15**



cake

# ANSWER KEY

## Phonics Short-A and Long-A Scavenger Hunt Activity



Find the short-a and long-a words in your classroom. Write the words on this page. Tell whether each word has the **ă** (short-a) or **ā** (long-a) sound

Card 1: snake **ă**  
word      ă or ā

Card 2: cat **ă**  
word      ă or ā



Card 7: ape **ă**  
word      ă or ā

Card 8: man **ă**  
word      ă or ā

Card 9: man **ă**  
word      ă or ā

Card 10: grapes **ā**  
word      ă or ā

Card 11: van **ă**  
word      ă or ā

Card 12: game **ā**  
word      ă or ā

Card 13: cape **ă**  
word      ă or ā

Card 14: cap **ă**  
word      ă or ā

Card 15: cake **ā**  
word      ă or ā