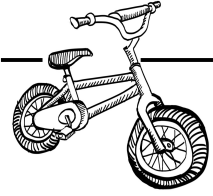


Pedal and Peddle



The words **pedal** and **peddle** sound the same, but they have different meanings.

The word **pedal** can refer to a foot-operated lever that propels a bicycle. It can also refer to a lever that operates the gas or brake on a motorized vehicle.

examples: Charlie put his foot on the **pedal** of his bike.

Use the same foot to operate both the gas **pedal** and brake **pedal**.

The word **peddle** refers to selling items by going door-to-door or place-to-place.

examples: The salesman tried to **peddle** his merchandise at local fairs.

Brandon's dad became annoyed when the merchant tried to **peddle** his cheaply made model airplanes to Brandon.

Write the word **pedal** or **peddle** in each blank to correctly complete the sentence.



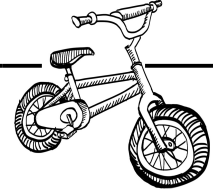
Preview

Please log in to download
the printable version of this worksheet.

5. The traveling salesman found clever ways to _____ his goods.
6. Uncle Pete spent ten years trying to _____ his wood-carved figurines across the Midwest.
7. Fritz's bicycle has a sticky left _____.
8. "Which one is the gas _____?" Anusha asked.
9. A traveling merchant tried to _____ his wares wherever he went.
10. Oh no! Davie's foot slipped off his bike _____, and he fell off.

ANSWER KEY

Pedal and Peddle



The words **pedal** and **peddle** sound the same, but they have different meanings.

The word **pedal** can refer to a foot-operated lever that propels a bicycle. It can also refer to a lever that operates the gas or brake on a motorized vehicle.

examples: Charlie put his foot on the **pedal** of his bike.

Use the same foot to operate both the gas **pedal** and brake **pedal**.

The word **peddle** refers to selling items by going door-to-door or place-to-place.

Preview

Please log in to download
the printable version of this worksheet.



10. Oh no! Davie's foot slipped off his bike **pedal**, and he fell off.

LD