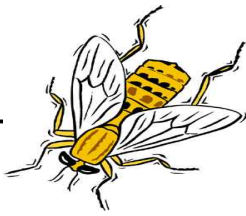


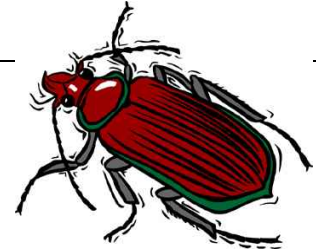
Name: _____



Insects

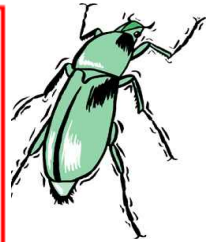
invertebrate	head	thorax	abdomen	egg
two	three	six	eight	wings
antennae	exoskeleton	metamorphosis		

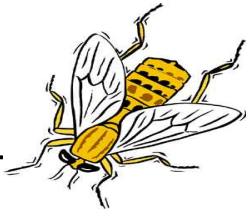
Choose the best word from the box to complete each sentence.



1. An insect has _____ main body sections.
2. The front part of an insect's body is called the _____.
3. The back part of an insect's body is called the _____.
4. Insects h
5. An insect
6. Insects do not have a backbone. They are _____.
7. An insect's body has a hard outer covering called an _____.
8. The first stage on an insect's life cycle is an _____.
9. Some insects have _____ attached to their thorax so they can fly.
10. Insects have two _____ on their head for feeling and smelling things around them.
11. A spider is not an insect because it has _____ body sections and _____ legs.
12. The changes of an insect as it develops from an egg to adult is called _____.

PREVIEW
Please log in or register to download the printable version of this worksheet.



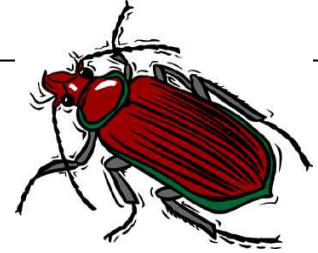


ANSWER KEY

Insects

invertebrate	head	thorax	abdomen	egg
two	three	six	eight	wings
antennae	exoskeleton	metamorphosis		

Choose the best word from the box to complete each sentence.



1. An insect has **three** main body sections.

2. The front part of an insect's body is called the **head**.

3. The bac

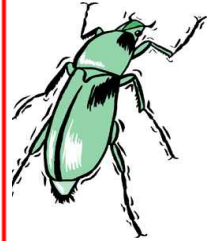
4. Insects h

5. An insect



~ PREVIEW ~

Please log in or register to download
the printable version of this worksheet.



6. Insects do not have a backbone. They are **invertebrates**.

7. An insect's body has a hard outer covering called an **exoskeleton**.

8. The first stage on an insect's life cycle is an **egg**.

9. Some insects have **wings** attached to their thorax so they can fly.

10. Insects have two **antennae** on their head for feeling and smelling things around them.

11. A spider is not an insect because it has **two** body sections and **eight** legs.

12. The changes of an insect as it develops from an egg to adult is called **metamorphosis**.